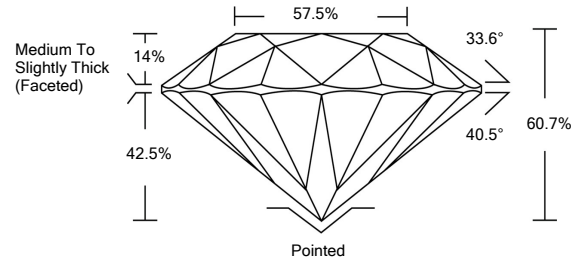




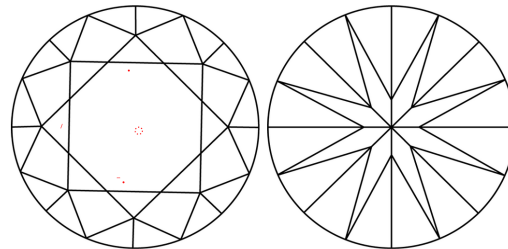
LG462170249

LABORATORY GROWN DIAMOND REPORT

PROPORTIONS



CLARITY CHARACTERISTICS



KEY TO SYMBOLS

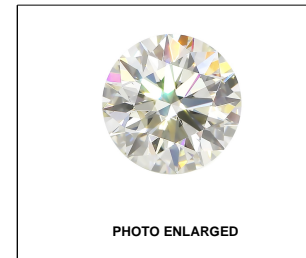
Red symbols indicate internal characteristics. Green symbols indicate external characteristics.

GRADING SCALES

Table with 5 columns for Color Grading Scale (CL, NC, FT, VLT, LT) and Clarity (10x) Grading Scale (FL, IF, VVS, VS, SI, I).

The laboratory grown diamond described in this Report (Report) has been graded, tested, analyzed, examined and/or inscribed by International Gemological Institute (IGI). A laboratory grown diamond is one that has essentially the same chemical, physical and optical properties as a mined diamond...

© INTERNATIONAL GEMOLOGICAL INSTITUTE, INC.



LABGROWN IGI LG462170249

LASERSCRIBESM

02/18/2021

IGI Report Number LG462170249

Shape and Cutting Style ROUND BRILLIANT

Measurements 7.62 - 7.65 x 4.63 mm

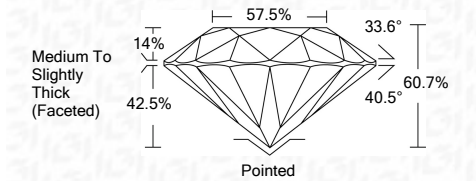
GRADING RESULTS

Carat Weight 1.67 CARAT

Color Grade E

Clarity Grade VVS 2

Cut Grade IDEAL



ADDITIONAL GRADING INFORMATION

Polish EXCELLENT

Symmetry EXCELLENT

Fluorescence NONE

Inscription(s) LABGROWN IGI LG462170249

Comments: As Grown - No indication of post-growth treatment. This Laboratory Grown Diamond was created by High Pressure High Temperature (HPHT) growth process. Type II



IGI

Summary table of report details: IGI Report No. LG462170249, ROUND BRILLIANT, 7.62 - 7.65 x 4.63 mm, 1.67 CARAT, E, VVS 2, IDEAL, 60.7%, 57.5%, Medium To Slightly Thick (Faceted), Pointed, EXCELLENT, EXCELLENT, NONE, LABGROWN IGI LG462170249.

02/18/2021

IGI Report No. LG462170249

ROUND BRILLIANT

7.62 - 7.65 x 4.63 mm

1.67 CARAT

E

VVS 2

IDEAL

60.7%

57.5%

Medium To Slightly Thick (Faceted)

Pointed

EXCELLENT

EXCELLENT

NONE

LABGROWN IGI LG462170249

Comments: As Grown - No indication of post-growth treatment. This Laboratory Grown Diamond was created by High Pressure High Temperature (HPHT) growth process. Type II

