



LG462171276

02/13/2021

IGI Report Number **LG462171276**

**ROUND BRILLIANT
4.17 - 4.20 X 2.73 MM**

Carat Weight	0.30 CARAT
Color Grade	E
Clarity Grade	SI 1
Cut Grade	VERY GOOD
Polish	EXCELLENT
Symmetry	VERY GOOD
Fluorescence	NONE
Inscription(s)	LABGROWN IGI LG462171276

Comments: As Grown - No indication of post-growth treatment. This Laboratory Grown Diamond was created by High Pressure High Temperature (HPHT) growth process.
Type II

IGI GEMOLOGICAL REPORT

IGI LABORATORY GROWN DIAMOND IDENTIFICATION REPORT

02/13/2021
IGI Report Number **LG462171276**
Shape and Cutting Style **ROUND BRILLIANT**
Measurements **4.17 - 4.20 X 2.73 MM**

GRADING RESULTS

Carat Weight **0.30 CARAT**
Color Grade **E**
Clarity Grade **SI 1**
Cut Grade **VERY GOOD**

ADDITIONAL GRADING INFORMATION

Polish **EXCELLENT**
Symmetry **VERY GOOD**
Fluorescence **NONE**
Inscription(s) **LABGROWN IGI LG462171276**

Comments: As Grown - No indication of post-growth treatment. This Laboratory Grown Diamond was created by High Pressure High Temperature (HPHT) growth process.
Type II



ADDITIONAL INFORMATION

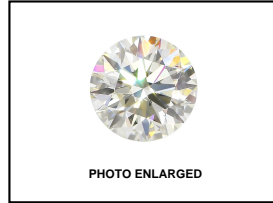
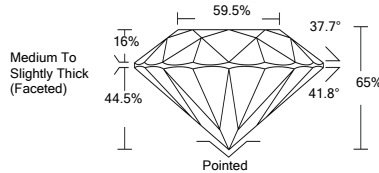


PHOTO ENLARGED



LASERSCRIBE SM



02/13/2021

IGI Report Number **LG462171276**

**ROUND BRILLIANT
4.17 - 4.20 X 2.73 MM**

Carat Weight	0.30 CARAT
Color Grade	E
Clarity Grade	SI 1
Cut Grade	VERY GOOD
Polish	EXCELLENT
Symmetry	VERY GOOD
Fluorescence	NONE
Inscription(s)	LABGROWN IGI LG462171276

Comments: As Grown - No indication of post-growth treatment. This Laboratory Grown Diamond was created by High Pressure High Temperature (HPHT) growth process.
Type II

This Laboratory Grown Diamond (LGD) described in this Report has been analyzed, graded and Laserscribed® by International Gemological Institute (IGI). A LGD has essentially the chemical, physical and optical properties of a mined diamond, with the exception of being man-made (a manufactured product). LGD's are typically produced by CVD (chemical vapor deposition) or by HPHT (high pressure high temperature) growth processes and may include post growth modifications to change the color. IGI utilizes the most advanced techniques and equipment currently available including, binocular microscopes, diamond color masters, non-contact-optical measuring device, a wide range analytical techniques including FTIR, UV-VIS-NIR, raman spectroscopy, and fluorescence analysis at various excitation wavelengths. This Report includes advanced security features. This Report is neither a guarantee, valuation nor appraisal and by making the report IGI does not agree to purchase or replace the article.

INTERNATIONAL GEMOLOGICAL INSTITUTE, INC
For Terms & Conditions, please visit www.igi.org

