



**LG462172883**

**IGI LABORATORY GROWN  
DIAMOND ID REPORT**

02/18/2021

IGI Report Number **LG462172883**

**ROUND BRILLIANT  
4.20 - 4.28 X 2.73 MM**

Carat Weight	0.30 CARAT
Color Grade	E
Clarity Grade	SI 1
Cut Grade	VERY GOOD
Polish	VERY GOOD
Symmetry	VERY GOOD
Fluorescence	NONE
Inscription(s)	LABGROWN IGI LG462172883

Comments: As Grown - No indication of post-growth treatment. This Laboratory Grown Diamond was created by High Pressure High Temperature (HPHT) growth process.  
Type II

**IGI LABORATORY GROWN  
DIAMOND ID REPORT**

02/18/2021

IGI Report Number **LG462172883**

**ROUND BRILLIANT  
4.20 - 4.28 X 2.73 MM**

Carat Weight	0.30 CARAT
Color Grade	E
Clarity Grade	SI 1
Cut Grade	VERY GOOD
Polish	VERY GOOD
Symmetry	VERY GOOD
Fluorescence	NONE
Inscription(s)	LABGROWN IGI LG462172883

Comments: As Grown - No indication of post-growth treatment. This Laboratory Grown Diamond was created by High Pressure High Temperature (HPHT) growth process.  
Type II

**IGI GEMOLOGICAL REPORT**

**IGI LABORATORY GROWN DIAMOND IDENTIFICATION REPORT**

02/18/2021  
IGI Report Number **LG462172883**  
Shape and Cutting Style **ROUND BRILLIANT**  
Measurements **4.20 - 4.28 X 2.73 MM**

**GRADING RESULTS**

Carat Weight **0.30 CARAT**  
Color Grade **E**  
Clarity Grade **SI 1**  
Cut Grade **VERY GOOD**

**ADDITIONAL GRADING INFORMATION**

Polish **VERY GOOD**  
Symmetry **VERY GOOD**  
Fluorescence **NONE**  
Inscription(s) **LABGROWN IGI LG462172883**

Comments: As Grown - No indication of post-growth treatment. This Laboratory Grown Diamond was created by High Pressure High Temperature (HPHT) growth process.  
Type II



**ADDITIONAL INFORMATION**

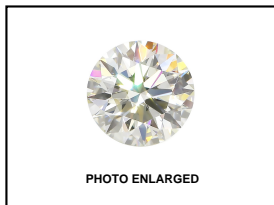
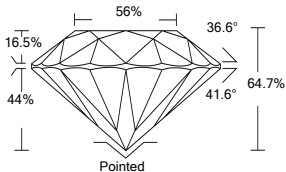


PHOTO ENLARGED



LASERSCRIBE SM

Medium To Slightly Thick (Faceted)



This Laboratory Grown Diamond (LGD) described in this Report has been analyzed, graded and Laserscribed® by International Gemological Institute (IGI). A LGD has essentially the chemical, physical and optical properties of a mined diamond, with the exception of being man-made (a manufactured product). LGDs are typically produced by CVD (chemical vapor deposition) or by HPHT (high pressure high temperature) growth processes and may include post growth modifications to change the color. IGI utilizes the most advanced techniques and equipment currently available including, binocular microscopes, diamond color masters, non-contact-optical measuring device, a wide range analytical techniques including FTIR, UV-VIS-NIR, raman spectroscopy, and fluorescence analysis at various excitation wavelengths. This Report includes advanced security features. This Report is neither a guarantee, valuation nor appraisal and by making the report IGI does not agree to purchase or replace the article.

**INTERNATIONAL GEMOLOGICAL INSTITUTE, INC**  
For Terms & Conditions, please visit [www.igi.org](http://www.igi.org)



THE DOCUMENT WAS PRODUCED THE FOLLOWING SECURITY MEASURES: SPECIAL DOCUMENT PAPER, INK SCREENS, WATERMARK BACKGROUNDING DESIGNS HOLOGRAM AND OTHER SECURITY FEATURES NOT LISTED AND DO EXCEED DOCUMENT SECURITY INDUSTRY DUDLINES