



LG462173072

**IGI LABORATORY GROWN
DIAMOND ID REPORT**
02/27/2021
IGI Report Number **LG462173072**

IGI GEMOLOGICAL REPORT

ADDITIONAL INFORMATION

ROUND BRILLIANT
4.24 - 4.27 X 2.76 MM

Carat Weight 0.31 CARAT
Color Grade E
Clarity Grade VVS 2
Cut Grade VERY GOOD
Polish VERY GOOD
Symmetry VERY GOOD
Fluorescence NONE
Inscription(s) LABGROWN IGI
LG462173072

Comments: As Grown - No indication of post-growth treatment. This Laboratory Grown Diamond was created by High Pressure High Temperature (HPHT) growth process.
Type II

IGI LABORATORY GROWN DIAMOND IDENTIFICATION REPORT

02/27/2021
IGI Report Number LG462173072
Shape and Cutting Style ROUND BRILLIANT
Measurements 4.24 - 4.27 X 2.76 MM

GRADING RESULTS
Carat Weight 0.31 CARAT
Color Grade E
Clarity Grade VVS 2
Cut Grade VERY GOOD

ADDITIONAL GRADING INFORMATION
Polish VERY GOOD
Symmetry VERY GOOD
Fluorescence NONE
Inscription(s) LABGROWN IGI LG462173072

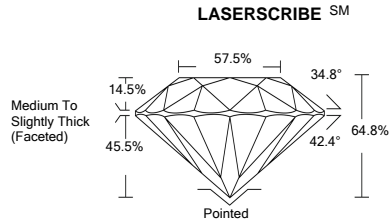
Comments: As Grown - No indication of post-growth treatment. This Laboratory Grown Diamond was created by High Pressure High Temperature (HPHT) growth process.
Type II



PHOTO ENLARGED



LASERSCRIBE SM



**IGI LABORATORY GROWN
DIAMOND ID REPORT**

02/27/2021
IGI Report Number **LG462173072**

ROUND BRILLIANT
4.24 - 4.27 X 2.76 MM

Carat Weight 0.31 CARAT
Color Grade E
Clarity Grade VVS 2
Cut Grade VERY GOOD
Polish VERY GOOD
Symmetry VERY GOOD
Fluorescence NONE
Inscription(s) LABGROWN IGI
LG462173072

Comments: As Grown - No indication of post-growth treatment. This Laboratory Grown Diamond was created by High Pressure High Temperature (HPHT) growth process.
Type II

This Laboratory Grown Diamond (LGD) described in this Report has been analyzed, graded and Laserscribed® by International Gemological Institute (IGI). A LGD has essentially the chemical, physical and optical properties as a mined diamond, with the exception of being man-made (a manufactured product). LGD's are typically produced by CVD (chemical vapor deposition) or by HPHT (high pressure high temperature) growth processes and may include post growth modifications to change the color. IGI utilizes the most advanced techniques and equipment currently available including, binocular microscopes, diamond color masters, non-contact-optical measuring device, a wide range analytical techniques including FTIR, UV-VIS-NIR, raman spectroscopy, and fluorescence analysis at various excitation wavelengths. This Report includes advanced security features. This Report is neither a guarantee, valuation nor appraisal and by making the report IGI does not agree to purchase or replace the article.

INTERNATIONAL GEMOLOGICAL INSTITUTE, INC

For Terms & Conditions, please visit www.igi.org



THE DOCUMENT WAS PRODUCED THE FOLLOWING SECURITY MEASURES: SPECIAL DOCUMENT PAPER, INK SCREENS, WATERMARK BACKGROUNDING DESIGNS HOLOGRAM AND OTHER SECURITY FEATURES NOT LISTED AND DO EXCEED DOCUMENT SECURITY INDUSTRY DUDLINES