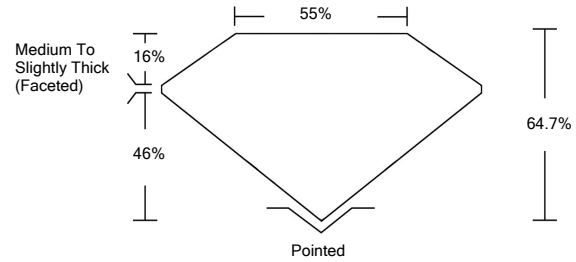




LG464114928

LABORATORY GROWN DIAMOND REPORT

PROPORTIONS

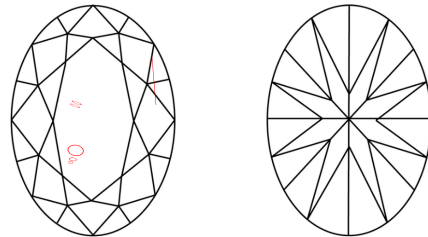


GRADING SCALES

Table with 5 columns for Color Grading Scale (CL to LT) and Clarity (10x) Grading Scale (FL to I).

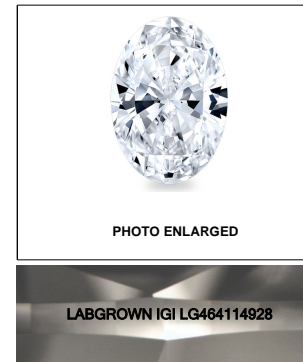
The laboratory grown diamond described in this Report (Report) has been graded, tested, analyzed, examined and/or inscribed by International Gemological Institute (IGI). A laboratory grown diamond is one that has essentially the same chemical, physical and optical properties as a mined diamond...

CLARITY CHARACTERISTICS



KEY TO SYMBOLS

Red symbols indicate internal characteristics. Green symbols indicate external characteristics.



LASERSCRIBE SM

03/05/2021

IGI Report Number LG464114928

Shape and Cutting Style OVAL BRILLIANT

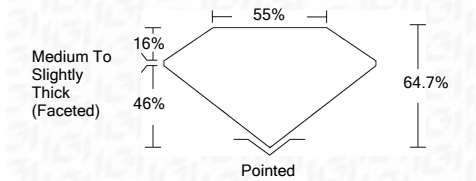
Measurements 7.79 x 5.63 x 3.64 mm

GRADING RESULTS

Carat Weight 1.00 CARAT

Color Grade D

Clarity Grade SI 2



ADDITIONAL GRADING INFORMATION

Polish EXCELLENT

Symmetry VERY GOOD

Fluorescence NONE

Inscription(s) LABGROWN IGI LG464114928

Comments: As Grown - No indication of post-growth treatment. This Laboratory Grown Diamond was created by High Pressure High Temperature (HPHT) growth process. Type II



IGI

03/05/2021 IGI Report No. LG464114928 OVAL BRILLIANT 7.79 x 5.63 x 3.64 mm 1.00 CARAT D SI 2 64.7% 55% Medium To Slightly Thick (Faceted) EXCELLENT VERY GOOD NONE LABGROWN IGI LG464114928

As Grown - No indication of post-growth treatment. This Laboratory Grown Diamond was created by High Pressure High Temperature (HPHT) growth process. Type II