



**INTERNATIONAL  
GEMOLOGICAL  
INSTITUTE**

**ELECTRONIC COPY**

**LG464195120**

**IGI LABORATORY GROWN  
DIAMOND ID REPORT**

03/10/2021

IGI Report Number **LG464195120**

**SQUARE CUSHION MODIFIED  
BRILLIANT**

**5.48 X 5.44 X 3.79 MM**

Carat Weight 0.87 CARAT

Color Grade I

Clarity Grade VVS 2

Polish EXCELLENT

Symmetry EXCELLENT

Fluorescence NONE

Inscription(s) LABGROWN IGI  
LG464195120

Comments: This Chemical Vapor  
Deposition (CVD) laboratory  
grown diamond is classified as  
Type IIa.

**LABORATORY GROWN DIAMOND REPORT**

**IGI LABORATORY GROWN DIAMOND IDENTIFICATION REPORT**

03/10/2021

IGI Report Number LG464195120

Shape and Cutting Style SQUARE CUSHION MODIFIED BRILLIANT

Measurements 5.48 X 5.44 X 3.79 MM

**GRADING RESULTS**

Carat Weight 0.87 CARAT

Color Grade I

Clarity Grade VVS 2

**ADDITIONAL GRADING INFORMATION**

Polish EXCELLENT

Symmetry EXCELLENT

Fluorescence NONE

Inscription(s) LABGROWN IGI LG464195120

Comments: This Chemical Vapor Deposition (CVD) laboratory grown  
diamond is classified as Type IIa.

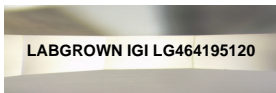


This Laboratory Grown Diamond (LGD) described in this Report has been analyzed, graded and Laserscribed® by International Gemological Institute (IGI). A LGD has essentially the chemical, physical and optical properties as a mined diamond, with the exception of being man-made (a manufactured product). LGDs are typically produced by CVD (chemical vapor deposition) or by HPHT (high pressure high temperature) growth processes and may include post growth modifications to change the color. IGI utilizes the most advanced techniques and equipment currently available including, binocular microscopes, diamond color masters, non-contact-optical measuring device, a wide range analytical techniques including FTIR, UV-VIS-NIR, raman spectroscopy, and fluorescence analysis at various excitation wavelengths. This Report includes advanced security features. This Report is neither a guarantee, valuation nor appraisal and by making the report IGI does not agree to purchase or replace the article.

**INTERNATIONAL GEMOLOGICAL INSTITUTE, INC**

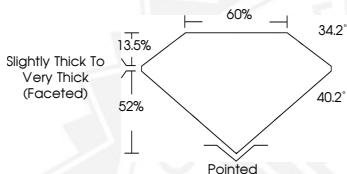


PHOTO ENLARGED



**LABGROWN IGI LG464195120**

**LASERSCRIBE SM**



**IGI LABORATORY GROWN  
DIAMOND ID REPORT**

03/10/2021

IGI Report Number **LG464195120**

**SQUARE CUSHION MODIFIED  
BRILLIANT**

**5.48 X 5.44 X 3.79 MM**

Carat Weight 0.87 CARAT

Color Grade I

Clarity Grade VVS 2

Polish EXCELLENT

Symmetry EXCELLENT

Fluorescence NONE

Inscription(s) LABGROWN IGI  
LG464195120

Comments: This Chemical Vapor  
Deposition (CVD) laboratory  
grown diamond is classified as  
Type IIa.

THIS DOCUMENT WAS PRODUCED WITH THE FOLLOWING SECURITY MEASURES: SPECIAL DOCUMENT PAPER, INK SCREENS, WATERMARK BACKGROUND DESIGN, HOLOGRAM AND OTHER SECURITY FEATURES NOT LISTED AND DO EXCEED DOCUMENT SECURITY INDUSTRY GUIDELINES.

For Terms & Conditions and to verify this report, please visit [www.igi.org](http://www.igi.org)