



INTERNATIONAL GEMOLOGICAL INSTITUTE

ELECTRONIC COPY

LG464196814

IGI LABORATORY GROWN DIAMOND ID REPORT

12/27/2020

IGI Report Number **LG464196814**

PEAR BRILLIANT

6.96 X 4.52 X 2.87 MM

Carat Weight 0.52 CARAT

Color Grade F

Clarity Grade SI 1

Polish EXCELLENT

Symmetry EXCELLENT

Fluorescence NONE

Inscription(s) LABGROWN IGI
LG464196814

Comments: This Chemical Vapor
Deposition (CVD) laboratory
grown diamond is classified as
Type IIa.

IGI LABORATORY GROWN DIAMOND ID REPORT

12/27/2020

IGI Report Number **LG464196814**

PEAR BRILLIANT

6.96 X 4.52 X 2.87 MM

Carat Weight 0.52 CARAT

Color Grade F

Clarity Grade SI 1

Polish EXCELLENT

Symmetry EXCELLENT

Fluorescence NONE

Inscription(s) LABGROWN IGI
LG464196814

Comments: This Chemical Vapor
Deposition (CVD) laboratory
grown diamond is classified as
Type IIa.

LABORATORY GROWN DIAMOND REPORT

IGI LABORATORY GROWN DIAMOND IDENTIFICATION REPORT

12/27/2020

IGI Report Number LG464196814

Shape and Cutting Style PEAR BRILLIANT

Measurements 6.96 X 4.52 X 2.87 MM

GRADING RESULTS

Carat Weight 0.52 CARAT

Color Grade F

Clarity Grade SI 1

ADDITIONAL GRADING INFORMATION

Polish EXCELLENT

Symmetry EXCELLENT

Fluorescence NONE

Inscription(s) LABGROWN IGI LG464196814

Comments: This Chemical Vapor Deposition (CVD) laboratory grown
diamond is classified as Type IIa.



This Laboratory Grown Diamond (LGD) described in this Report has been analyzed, graded and Laserscribed® by International Gemological Institute (IGI). A LGD has essentially the chemical, physical and optical properties as a mined diamond, with the exception of being man-made (a manufactured product). LGDs are typically produced by CVD (chemical vapor deposition) or by HPHT (high pressure high temperature) growth processes and may include post growth modifications to change the color. IGI utilizes the most advanced techniques and equipment currently available including, binocular microscopes, diamond color masters, non-contact-optical measuring device, a wide range analytical techniques including FTIR, UV-VIS-NIR, raman spectroscopy, and fluorescence analysis at various excitation wavelengths. This Report includes advanced security features. This Report is neither a guarantee, valuation nor appraisal and by making the report IGI does not agree to purchase or replace the article.

INTERNATIONAL GEMOLOGICAL INSTITUTE, INC

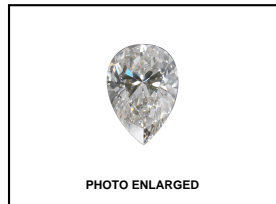
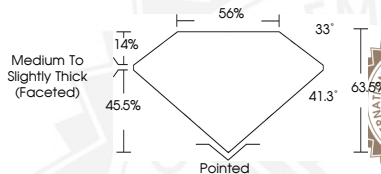


PHOTO ENLARGED



LABGROWN IGI LG464196814

LASERSCRIBE SM



THIS DOCUMENT WAS PRODUCED WITH THE FOLLOWING SECURITY MEASURES: SPECIAL DOCUMENT PAPER, INK SCREENS, WATERMARK BACKGROUND DESIGN, HOLOGRAM AND OTHER SECURITY FEATURES NOT LISTED AND DO EXCEED DOCUMENT SECURITY INDUSTRY GUIDELINES.

For Terms & Conditions and to verify this report, please visit www.igi.org