



12/27/2020

IGI Report Number **LG464197396**

Measurements	7.10 - 7.17 x 4.39 mm
--------------	-----------------------

Carat Weight 1.36 CARAT

Clarity Grade	SI 2
---------------	------

Cut Grade **EXCELLENT**

Polish EXCELLENT

Symmetry **EXCELLENT**Fluorescence **NONE**

Inscription(s)	LABGROWN IGI LG464197396
----------------	--------------------------

Comments: This Chemical Vapor Deposition (CVD) laboratory grown diamond is classified as Type IIa.

LG464197396

Medium (Faceted)

59.5%

14%

44%

34.5°

41.6°

61.6%

Pointed

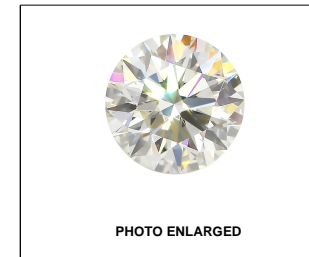
Red symbols indicate internal characteristics.
Green symbols indicate external characteristics.

COLOR GRADING SCALE	CL		NC		FT		VLT		LT	
	COLORLESS D-F		NEAR COLORLESS G-J		FAINT K-M		VERY LIGHT N-R		LIGHT S-Z	
CLARITY (10x) GRADING SCALE	FL IF		VVS		VS		SI		I	
	FLAWLESS INTERNALLY FLAWLESS		VERY VERY SLIGHTLY INCLUDED		VERY SLIGHTLY INCLUDED		SLIGHTLY INCLUDED		INCLUDED	

The laboratory growdiamond described in this Report (Report) has been graded, tested, analyzed, examined and/or inscribed by International Gemological Institute (IGI). A laboratory grown diamond is one that has essentially the same chemical, physical and optical properties as a natural diamond. IGI is a company owned and operated by a Jeweler (man) (a manufactured product). IGI employs and utilizes those techniques and equipment currently available to IGI, including, without limitation, 10X magnification, corrected triple-beam spectrophotometer, microscope, master color comparison stones, non-contact optical measuring device, Diamond and Viewmaster, and other instruments and optical instruments and/or processes as deemed appropriate by IGI. This Report includes advanced security features. A duly accredited gemologist or jeweler can advise you with respect to the importance of and interrelationship between cut, color, clarity and carat weight.

THIS REPORT IS NEITHER A GUARANTEE, VALUATION, NOR APPRAISAL OF THE GEMSTONE DESCRIBED HEREIN. PLEASE REVIEW THE LIMITATIONS AND RESTRICTIONS IN NORTH ONLINE, FOR AUCTION, AND IGI.COM, FOR AUCTION, LIMITATIONS AND DISCLAIMERS. PLEASE GO TO WWW.IGI.ORG OR CALL 1-888-BUY-IGI.

© INTERNATIONAL GEMOLOGICAL INSTITUTE, INC.



LABGROWN IGI LG464197396

LASERSCRIBESM

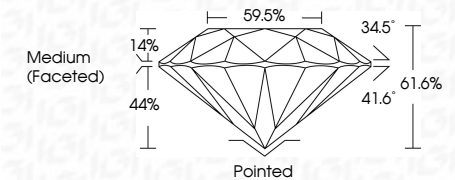
© IGI 2020, International Gemological Institute

FD - 10 20

THIS DOCUMENT WAS PRODUCED WITH THE FOLLOWING SECURITY MEASURES: SPECIAL DOCUMENT PAPER, INK SCREENS, WATERMARK, BACKGROUND DESIGNS, HOLOGRAM AND OTHER SECURITY FEATURES NOT LISTED AND DO EXCEED DOCUMENT SECURITY INDUSTRY GUIDELINE

12/27/2020	
IGI Report Number	LG464197396
Shape and Cutting Style	ROUND BRILLIANT
Measurements	7.10 - 7.17 x 4.39 mm

Carat Weight	1.36 CARAT
Color Grade	F
Clarity Grade	SI 2
Cut Grade	EXCELLENT



Polish	EXCELLENT
Symmetry	EXCELLENT
Fluorescence	NONE
Inscription(s)	LABGROWN IGI LG464197396

Comments: This Chemical Vapor Deposition (CVD) laboratory grown diamond is classified as Type IIa.



12/27/2020	IGI Report No. LG4419796	
ROUND BRILLIANT		
10.10 - 11.7 x 4.39 mm		
Carat Weight	1.86 CARAT	
Color Grade	F	
Clarity Grade	S12	
Cut Grade	EXCELLENT	
Depth	61.6%	
Table	59.5%	
Grade		Medium (Faceted)
Color		Painted
Polish	EXCELLENT	
Symmetry	EXCELLENT	
Fluorescence	NONE	
Inscription(s)	LAGROWN IGI LG4419796	
Comments: Excellent Vapor Deposition (CVD) laboratory grown diamond is classified as Type IIa.		