



LG464197497

LABORATORY GROWN DIAMOND REPORT

12/28/2020
IGI Report Number LG464197497
Shape and Cutting Style PRINCESS CUT
Measurements 6.81 x 6.74 x 4.89 mm

GRADING RESULTS

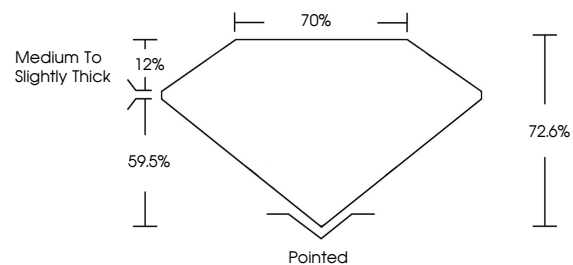
Carat Weight 2.06 CARATS
Color Grade I
Clarity Grade SI 2

ADDITIONAL GRADING INFORMATION

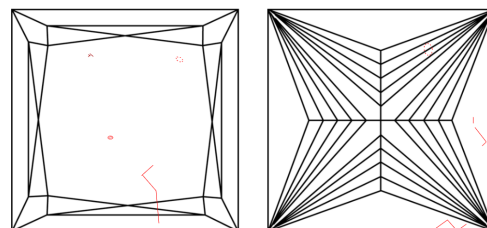
Polish EXCELLENT
Symmetry EXCELLENT
Fluorescence NONE
Inscription(s) LABGROWN IGI LG464197497

Comments: This Chemical Vapor Deposition (CVD) laboratory grown diamond is classified as Type IIa.

PROPORTIONS



CLARITY CHARACTERISTICS



KEY TO SYMBOLS

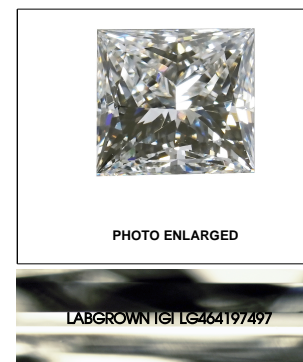
Red symbols indicate internal characteristics.
Green symbols indicate external characteristics.

GRADING SCALES

Table with 5 columns for Color Grading Scale (CL to LT) and Clarity (10x) Grading Scale (FL to I).

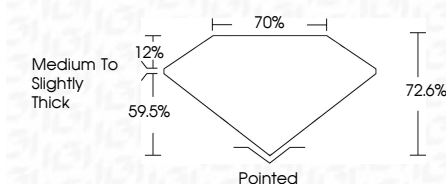
The laboratory grown diamond described in this Report (Report) has been graded, tested, analyzed, examined and/or inscribed by International Gemological Institute (IGI). A laboratory grown diamond is one that has essentially the same chemical, physical and optical properties as a mined diamond...

© INTERNATIONAL GEMOLOGICAL INSTITUTE, INC.



LASERSCRIBE SM

12/28/2020
IGI Report Number LG464197497
Shape and Cutting Style PRINCESS CUT
Measurements 6.81 x 6.74 x 4.89 mm
GRADING RESULTS
Carat Weight 2.06 CARATS
Color Grade I
Clarity Grade SI 2



ADDITIONAL GRADING INFORMATION

Polish EXCELLENT
Symmetry EXCELLENT
Fluorescence NONE
Inscription(s) LABGROWN IGI LG464197497

Comments: This Chemical Vapor Deposition (CVD) laboratory grown diamond is classified as Type IIa.



IGI

12/28/2020
IGI Report No. LG464197497
PRINCESS CUT
6.81 x 6.74 x 4.89 mm
Carat Weight 2.06 CARATS
Color Grade I
Clarity Grade SI 2
Depth 72.6%
Table 70%
Girdle Medium to Slightly Thick
Culet Pointed
Polish EXCELLENT
Symmetry EXCELLENT
Fluorescence NONE
Inscription(s) LABGROWN IGI LG464197497
Comments: This Chemical Vapor Deposition (CVD) laboratory grown diamond is classified as Type IIa.