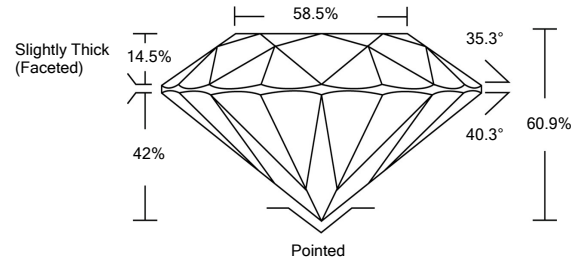




LG467166154

LABORATORY GROWN DIAMOND REPORT

PROPORTIONS

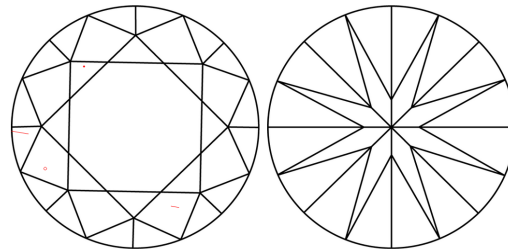


GRADING SCALES

Table with 5 columns for Color Grading Scale (CL, NC, FT, VLT, LT) and Clarity (10x) Grading Scale (FL, IF, VVS, VS, SI, I) with corresponding descriptions.

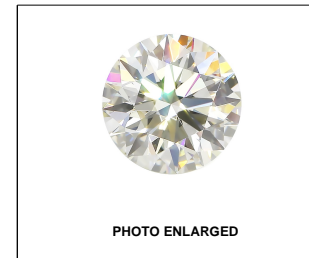
The laboratory grown diamond described in this Report (Report) has been graded, tested, analyzed, examined and/or inscribed by International Gemological Institute (IGI). A laboratory grown diamond is one that has essentially the same chemical, physical and optical properties as a mined diamond...

CLARITY CHARACTERISTICS



KEY TO SYMBOLS

Red symbols indicate internal characteristics. Green symbols indicate external characteristics.



LABGROWN IGI LG467166154

LASERSCRIBESM

03/26/2021

IGI Report Number LG467166154

Shape and Cutting Style ROUND BRILLIANT

Measurements 8.67 - 8.72 x 5.30 mm

GRADING RESULTS

Carat Weight 2.51 CARATS

Color Grade J

Clarity Grade VS 1

Cut Grade IDEAL

ADDITIONAL GRADING INFORMATION

Polish EXCELLENT

Symmetry EXCELLENT

Fluorescence NONE

Inscription(s) LABGROWN IGI LG467166154

Comments: This Laboratory Grown Diamond was created by Chemical Vapor Deposition (CVD) growth process and may include post-growth treatment. Type IIa



Summary table of diamond details: IGI Report No. LG467166154, ROUND BRILLIANT, 8.67 - 8.72 x 5.30 mm, 2.51 CARATS, Color Grade J, Clarity Grade VS 1, Cut Grade IDEAL, Depth 60.9%, Table 58.5%, Girdle Slightly Thick (Faceted), Culet Pointed, Polish EXCELLENT, Symmetry EXCELLENT, Fluorescence NONE, Inscription(s) LABGROWN IGI LG467166154.

03/26/2021

IGI Report No. LG467166154

ROUND BRILLIANT

8.67 - 8.72 x 5.30 mm

Color Grade

J

2.51 CARATS

Clarity Grade

VS 1

Cut Grade

IDEAL

Depth

60.9%

Table

58.5%

Girdle

Slightly Thick (Faceted)

Culet

Pointed

Polish

EXCELLENT

Symmetry

EXCELLENT

Fluorescence

NONE

Inscription(s)

LABGROWN IGI LG467166154

Comments: This Laboratory Grown Diamond was created by Chemical Vapor Deposition (CVD) growth process and may include post-growth treatment. Type IIa

