



LABORATORY GROWN DIAMOND REPORT

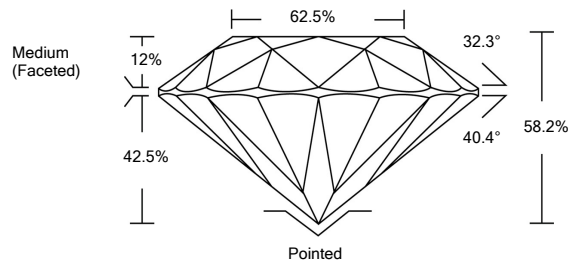
LG468169956

GRADING SCALES

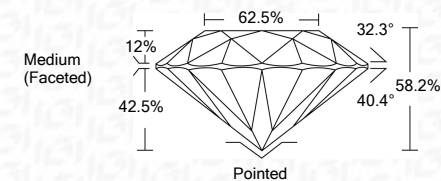
Table with 5 columns for Color Grading Scale (CL, NC, FT, VLT, LT) and Clarity (10x) Grading Scale (FL, IF, VVS, VS, SI, I).

The laboratory grown diamond described in this Report (Report) has been graded, tested, analyzed, examined and/or inscribed by International Gemological Institute (IGI). A laboratory grown diamond is one that has essentially the same chemical, physical and optical properties as a mined diamond...

PROPORTIONS



03/16/2021 IGI Report Number LG468169956 Shape and Cutting Style ROUND BRILLIANT Measurements 6.71 - 6.74 x 3.92 mm GRADING RESULTS Carat Weight 1.09 CARAT Color Grade E Clarity Grade VVS 2 Cut Grade EXCELLENT



ADDITIONAL GRADING INFORMATION Polish EXCELLENT Symmetry EXCELLENT Fluorescence NONE Inscription(s) LABGROWN IGI LG468169956

Comments: As Grown - No indication of post-growth treatment. This Laboratory Grown Diamond was created by High Pressure High Temperature (HPHT) growth process. Type II

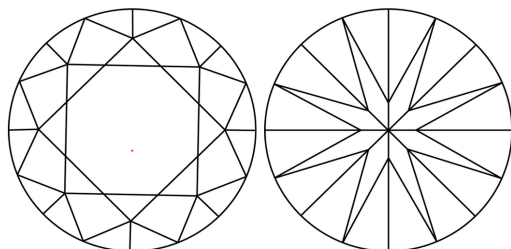
03/16/2021 IGI Report Number LG468169956 Shape and Cutting Style ROUND BRILLIANT Measurements 6.71 - 6.74 x 3.92 mm

GRADING RESULTS Carat Weight 1.09 CARAT Color Grade E Clarity Grade VVS 2 Cut Grade EXCELLENT

ADDITIONAL GRADING INFORMATION Polish EXCELLENT Symmetry EXCELLENT Fluorescence NONE Inscription(s) LABGROWN IGI LG468169956

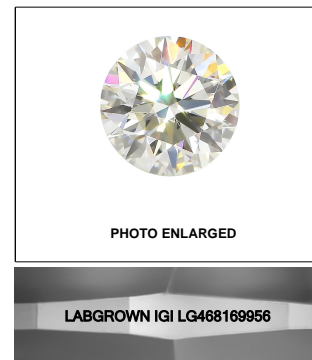
Comments: As Grown - No indication of post-growth treatment. This Laboratory Grown Diamond was created by High Pressure High Temperature (HPHT) growth process. Type II

CLARITY CHARACTERISTICS



KEY TO SYMBOLS

Red symbols indicate internal characteristics. Green symbols indicate external characteristics.



LASERSCRIBE SM



IGI

03/16/2021 IGI Report No. LG468169956 ROUND BRILLIANT Carat Weight 1.09 CARAT Color Grade E Clarity Grade VVS 2 Cut Grade EXCELLENT Depth 58.2% Table 62.5% Girdle Medium (Faceted) Culet Pointed Polish EXCELLENT Symmetry EXCELLENT Fluorescence NONE Inscription(s) LABGROWN IGI LG468169956 Comments: As Grown - No indication of post-growth treatment. This Laboratory Grown Diamond was created by High Pressure High Temperature (HPHT) growth process. Type II