



LG468173816

LABORATORY GROWN DIAMOND REPORT

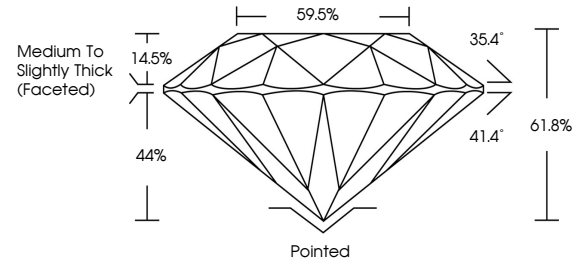
12/27/2020
IGI Report Number LG468173816
Shape and Cutting Style ROUND BRILLIANT
Measurements 6.99 - 7.02 x 4.33 mm

GRADING RESULTS
Carat Weight 1.30 CARAT
Color Grade J
Clarity Grade VVS 2
Cut Grade EXCELLENT

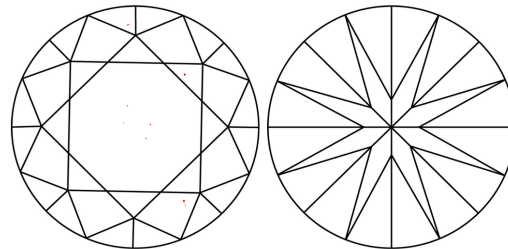
ADDITIONAL GRADING INFORMATION
Polish EXCELLENT
Symmetry EXCELLENT
Fluorescence NONE
Inscription(s) LABGROWN IGI LG468173816

Comments: This Chemical Vapor Deposition (CVD) laboratory grown diamond is classified as Type IIa.

PROPORTIONS



CLARITY CHARACTERISTICS



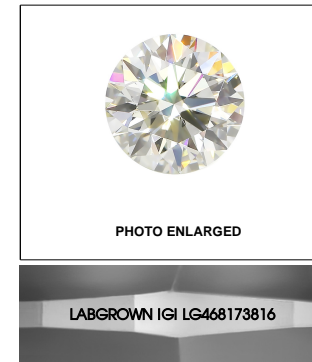
KEY TO SYMBOLS

Red symbols indicate internal characteristics.
Green symbols indicate external characteristics.

GRADING SCALES

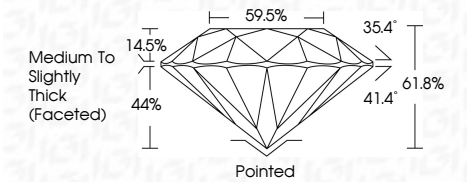
Table with 5 columns for Color Grading Scale (CL, NC, FT, VLT, LT) and Clarity (10x) Grading Scale (FL, IF, VVS, VS, SI, I).

The laboratory grown diamond described in this Report (Report) has been graded, tested, analyzed, examined and/or inscribed by International Gemological Institute (IGI). A laboratory grown diamond is one that has essentially the same chemical, physical and optical properties as a mined diamond...



LASERSCRIBE SM

12/27/2020
IGI Report Number LG468173816
Shape and Cutting Style ROUND BRILLIANT
Measurements 6.99 - 7.02 x 4.33 mm
GRADING RESULTS
Carat Weight 1.30 CARAT
Color Grade J
Clarity Grade VVS 2
Cut Grade EXCELLENT



ADDITIONAL GRADING INFORMATION
Polish EXCELLENT
Symmetry EXCELLENT
Fluorescence NONE
Inscription(s) LABGROWN IGI LG468173816

Comments: This Chemical Vapor Deposition (CVD) laboratory grown diamond is classified as Type IIa.



IGI

12/27/2020
IGI Report No LG468173816
ROUND BRILLIANT
Carat Weight 1.30 CARAT
Color Grade J
Clarity Grade VVS 2
Cut Grade EXCELLENT
Depth 61.8%
Table 59.5%
Girdle Medium To Slightly Thick (Faceted)
Culet Pointed
Polish EXCELLENT
Symmetry EXCELLENT
Fluorescence NONE
Inscription(s) LABGROWN IGI LG468173816
Comments: This Chemical Vapor Deposition (CVD) laboratory grown diamond is classified as Type IIa.