



LG468174532

LABORATORY GROWN DIAMOND REPORT

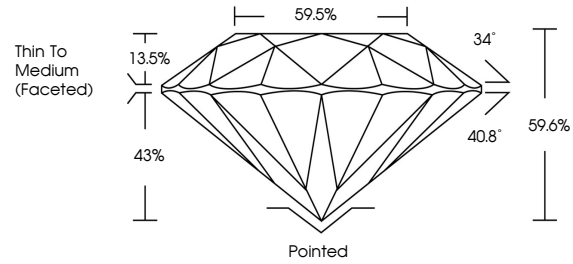
05/01/2021
IGI Report Number LG468174532
Shape and Cutting Style ROUND BRILLIANT
Measurements 6.86 - 6.88 x 4.10 mm

GRADING RESULTS
Carat Weight 1.17 CARAT
Color Grade G
Clarity Grade VVS 2
Cut Grade IDEAL

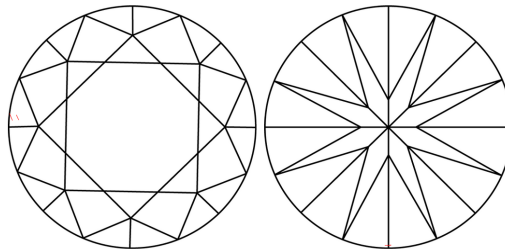
ADDITIONAL GRADING INFORMATION
Polish EXCELLENT
Symmetry EXCELLENT
Fluorescence NONE
Inscription(s) LABGROWN IGI LG468174532

Comments: This Laboratory Grown Diamond was created by Chemical Vapor Deposition (CVD) growth process and may include post-growth treatment Type IIa

PROPORTIONS



CLARITY CHARACTERISTICS



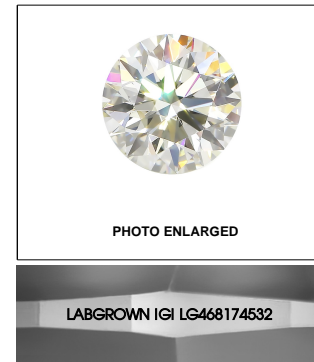
KEY TO SYMBOLS

Red symbols indicate internal characteristics.
Green symbols indicate external characteristics.

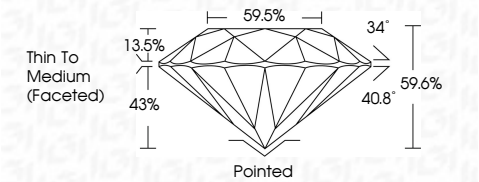
GRADING SCALES

Table with 5 columns: COLOR GRADING SCALE (CL, NC, FT, VLT, LT), CLARITY (10x) GRADING SCALE (FL, IF, VVS, VS, SI, I).

The laboratory grown diamond described in this Report (Report) has been graded, tested, analyzed, examined and/or inscribed by International Gemological Institute (IGI). A laboratory grown diamond is one that has essentially the same chemical, physical and optical properties as a mined diamond...



05/01/2021
IGI Report Number LG468174532
Shape and Cutting Style ROUND BRILLIANT
Measurements 6.86 - 6.88 x 4.10 mm
GRADING RESULTS
Carat Weight 1.17 CARAT
Color Grade G
Clarity Grade VVS 2
Cut Grade IDEAL



ADDITIONAL GRADING INFORMATION
Polish EXCELLENT
Symmetry EXCELLENT
Fluorescence NONE
Inscription(s) LABGROWN IGI LG468174532

Comments: This Laboratory Grown Diamond was created by Chemical Vapor Deposition (CVD) growth process and may include post-growth treatment Type IIa



IGI

05/01/2021
IGI Report No LG468174532
ROUND BRILLIANT
6.86 - 6.88 x 4.10 mm
Carat Weight 1.17 CARAT
Color Grade G
Clarity Grade VVS 2
Cut Grade IDEAL
Depth 59.6%
Table 59.5%
Girdle Thin To Medium (Faceted)
Culet Pointed
Polish EXCELLENT
Symmetry EXCELLENT
Fluorescence NONE
Inscription(s) LABGROWN IGI LG468174532
Comments: This Laboratory Grown Diamond was created by Chemical Vapor Deposition (CVD) growth process and may include post-growth treatment Type IIa