



LG468174926

LABORATORY GROWN DIAMOND REPORT

12/27/2020
IGI Report Number LG468174926
Shape and Cutting Style ROUND BRILLIANT
Measurements 6.97 - 6.99 x 4.35 mm

GRADING RESULTS

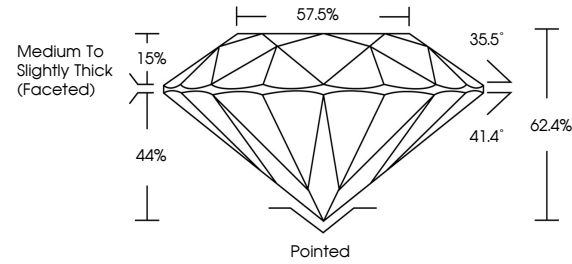
Carat Weight 1.30 CARAT
Color Grade G
Clarity Grade VVS 2
Cut Grade EXCELLENT

ADDITIONAL GRADING INFORMATION

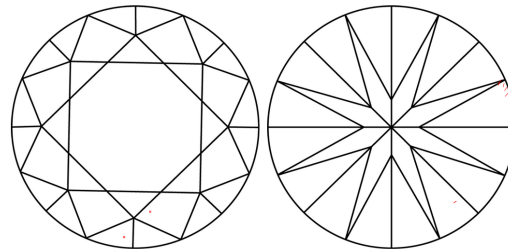
Polish EXCELLENT
Symmetry EXCELLENT
Fluorescence NONE
Inscription(s) LABGROWN IGI LG468174926

Comments: This Chemical Vapor Deposition (CVD) laboratory grown diamond is classified as Type IIa.

PROPORTIONS



CLARITY CHARACTERISTICS



KEY TO SYMBOLS

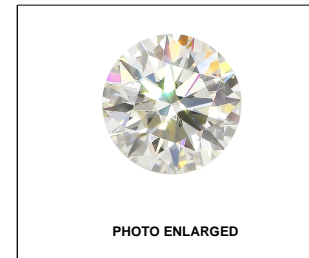
Red symbols indicate internal characteristics.
Green symbols indicate external characteristics.

GRADING SCALES

Table with 5 columns for Color Grading Scale (CL, NC, FT, VLT, LT) and Clarity (10x) Grading Scale (FL, IF, VVS, VS, SI, I).

The laboratory grown diamond described in this Report (Report) has been graded, tested, analyzed, examined and/or inscribed by International Gemological Institute (IGI). A laboratory grown diamond is one that has essentially the same chemical, physical and optical properties as a mined diamond...

© INTERNATIONAL GEMOLOGICAL INSTITUTE, INC.



LABGROWN IGI LG468174926

LASERSCRIBE SM



12/27/2020
IGI Report Number LG468174926
Shape and Cutting Style ROUND BRILLIANT
Measurements 6.97 - 6.99 x 4.35 mm

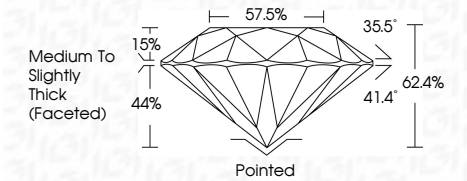
GRADING RESULTS

Carat Weight 1.30 CARAT
Color Grade G
Clarity Grade VVS 2
Cut Grade EXCELLENT

ADDITIONAL GRADING INFORMATION

Polish EXCELLENT
Symmetry EXCELLENT
Fluorescence NONE
Inscription(s) LABGROWN IGI LG468174926

Comments: This Chemical Vapor Deposition (CVD) laboratory grown diamond is classified as Type IIa.



IGI

12/27/2020
IGI Report No LG468174926
ROUND BRILLIANT
Carat Weight 1.30 CARAT
Color Grade G
Clarity Grade VVS 2
Cut Grade EXCELLENT
Depth 62.4%
Table 57.5%
Girdle Medium To Slightly Thick (Faceted)
Culet Pointed
Polish EXCELLENT
Symmetry EXCELLENT
Fluorescence NONE
Inscription(s) LABGROWN IGI LG468174926
Comments: This Chemical Vapor Deposition (CVD) laboratory grown diamond is classified as Type IIa.