



LG468175112

LABORATORY GROWN DIAMOND REPORT

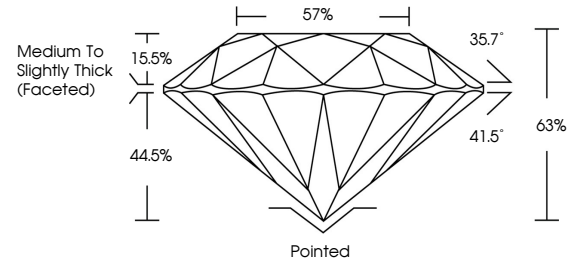
12/27/2020
IGI Report Number LG468175112
Shape and Cutting Style ROUND BRILLIANT
Measurements 7.15 - 7.21 x 4.52 mm

GRADING RESULTS
Carat Weight 1.43 CARAT
Color Grade I
Clarity Grade VS 1
Cut Grade EXCELLENT

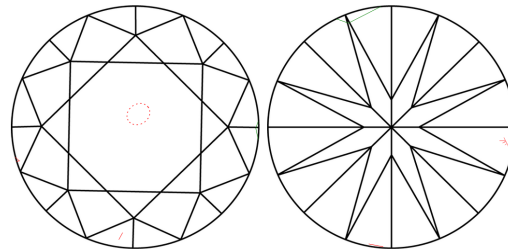
ADDITIONAL GRADING INFORMATION
Polish EXCELLENT
Symmetry VERY GOOD
Fluorescence NONE
Inscription(s) LABGROWN IGI LG468175112

Comments: This Chemical Vapor Deposition (CVD) laboratory grown diamond is classified as Type IIa.

PROPORTIONS



CLARITY CHARACTERISTICS



KEY TO SYMBOLS

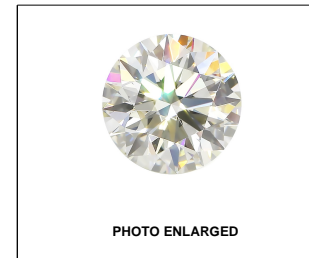
Red symbols indicate internal characteristics.
Green symbols indicate external characteristics.

GRADING SCALES

Table with 5 columns for Color Grading Scale (CL, NC, FT, VLT, LT) and Clarity (10x) Grading Scale (FL, IF, VVS, VS, SI, I). Includes sub-labels like 'COLORLESS D-F', 'NEAR COLORLESS G-J', etc.

The laboratory grown diamond described in this Report (Report) has been graded, tested, analyzed, examined and/or inscribed by International Gemological Institute (IGI). A laboratory grown diamond is one that has essentially the same chemical, physical and optical properties as a mined diamond, with the exception of being grown by man (a manufactured product).

© INTERNATIONAL GEMOLOGICAL INSTITUTE, INC.

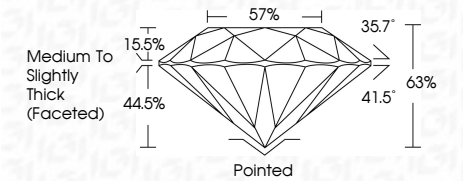


LABGROWN IGI LG468175112

LASERSCRIBE SM

12/27/2020
IGI Report Number LG468175112
Shape and Cutting Style ROUND BRILLIANT
Measurements 7.15 - 7.21 x 4.52 mm

GRADING RESULTS
Carat Weight 1.43 CARAT
Color Grade I
Clarity Grade VS 1
Cut Grade EXCELLENT



ADDITIONAL GRADING INFORMATION
Polish EXCELLENT
Symmetry VERY GOOD
Fluorescence NONE
Inscription(s) LABGROWN IGI LG468175112

Comments: This Chemical Vapor Deposition (CVD) laboratory grown diamond is classified as Type IIa.



IGI

12/27/2020
IGI Report No LG468175112
ROUND BRILLIANT
Carat Weight 1.43 CARAT
Color Grade I
Clarity Grade VS 1
Depth 68%
Table 57%
Girdle Medium To Slightly Thick (Faceted)
Culet Pointed
Polish EXCELLENT
Symmetry VERY GOOD
Fluorescence NONE
Inscription(s) LABGROWN IGI LG468175112
Comments: This Chemical Vapor Deposition (CVD) laboratory grown diamond is classified as Type IIa.