



# INTERNATIONAL GEMOLOGICAL INSTITUTE

**ELECTRONIC COPY**

**LG468175260**

## IGI LABORATORY GROWN DIAMOND ID REPORT

12/27/2020

IGI Report Number **LG468175260**

### PRINCESS CUT

**5.14 X 5.13 X 3.60 MM**

Carat Weight 0.84 CARAT

Color Grade J

Clarity Grade VVS 2

Polish EXCELLENT

Symmetry VERY GOOD

Fluorescence NONE

Inscription(s) LABGROWN IGI  
LG468175260

Comments: This Chemical Vapor  
Deposition (CVD) laboratory  
grown diamond is classified as  
Type IIa.

## IGI LABORATORY GROWN DIAMOND ID REPORT

12/27/2020

IGI Report Number **LG468175260**

### PRINCESS CUT

**5.14 X 5.13 X 3.60 MM**

Carat Weight 0.84 CARAT

Color Grade J

Clarity Grade VVS 2

Polish EXCELLENT

Symmetry VERY GOOD

Fluorescence NONE

Inscription(s) LABGROWN IGI  
LG468175260

Comments: This Chemical Vapor  
Deposition (CVD) laboratory  
grown diamond is classified as  
Type IIa.

## LABORATORY GROWN DIAMOND REPORT

### IGI LABORATORY GROWN DIAMOND IDENTIFICATION REPORT

12/27/2020

IGI Report Number LG468175260

Shape and Cutting Style PRINCESS CUT

Measurements 5.14 X 5.13 X 3.60 MM

### GRADING RESULTS

Carat Weight 0.84 CARAT

Color Grade J

Clarity Grade VVS 2

### ADDITIONAL GRADING INFORMATION

Polish EXCELLENT

Symmetry VERY GOOD

Fluorescence NONE

Inscription(s) LABGROWN IGI LG468175260

Comments: This Chemical Vapor Deposition (CVD) laboratory grown  
diamond is classified as Type IIa.



This Laboratory Grown Diamond (LGD) described in this Report has been analyzed, graded and Laserscribed® by International Gemological Institute (IGI). A LGD has essentially the chemical, physical and optical properties as a mined diamond, with the exception of being man-made (a manufactured product). LGDs are typically produced by CVD (chemical vapor deposition) or by HPHT (high pressure high temperature) growth processes and may include post growth modifications to change the color. IGI utilizes the most advanced techniques and equipment currently available including, binocular microscopes, diamond color masters, non-contact-optical measuring device, a wide range analytical techniques including FTIR, UV-VIS-NIR, raman spectroscopy, and fluorescence analysis at various excitation wavelengths. This Report includes advanced security features. This Report is neither a guarantee, valuation nor appraisal and by making the report IGI does not agree to purchase or replace the article.

INTERNATIONAL GEMOLOGICAL INSTITUTE, INC

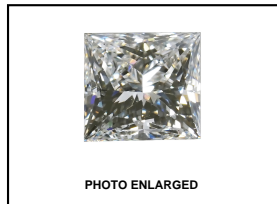
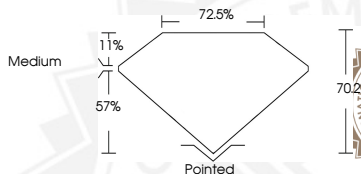


PHOTO ENLARGED



LABGROWN IGI LG468175260

### LASERSCRIBE SM



THIS DOCUMENT WAS PRODUCED WITH THE FOLLOWING SECURITY MEASURES: SPECIAL DOCUMENT PAPER, INK SCREENS, WATERMARK BACKGROUND DESIGN, HOLOGRAM AND OTHER SECURITY FEATURES NOT LISTED AND DO EXCEED DOCUMENT SECURITY INDUSTRY GUIDELINES.

For Terms & Conditions and to verify this report, please visit [www.igi.org](http://www.igi.org)