



LG468175714

LABORATORY GROWN DIAMOND REPORT

12/28/2020
IGI Report Number LG468175714
Shape and Cutting Style PRINCESS CUT
Measurements 7.90 x 7.70 x 5.47 mm

GRADING RESULTS

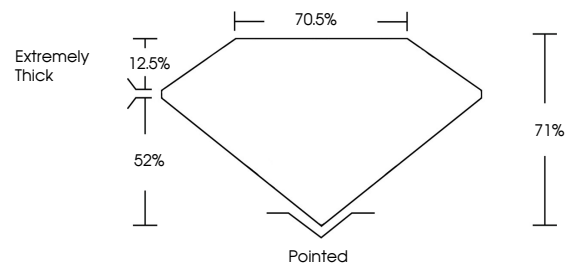
Carat Weight 3.28 CARATS
Color Grade I
Clarity Grade VS 2

ADDITIONAL GRADING INFORMATION

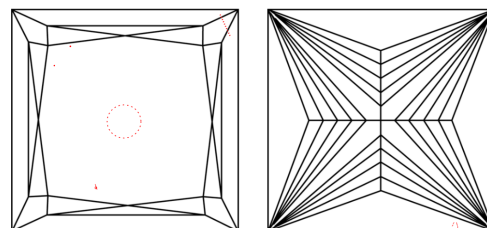
Polish EXCELLENT
Symmetry EXCELLENT
Fluorescence NONE
Inscription(s) LABGROWN IGI LG468175714

Comments: This Chemical Vapor Deposition (CVD) laboratory grown diamond is classified as Type IIa.

PROPORTIONS



CLARITY CHARACTERISTICS



KEY TO SYMBOLS

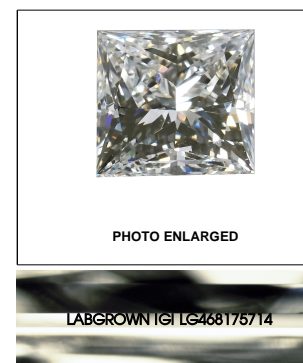
Red symbols indicate internal characteristics.
Green symbols indicate external characteristics.

GRADING SCALES

Table with 5 columns for Color Grading Scale (CL to LT) and Clarity (10x) Grading Scale (FL to I).

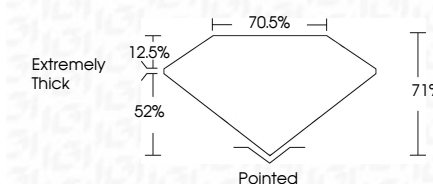
The laboratory grown diamond described in this Report (Report) has been graded, tested, analyzed, examined and/or inscribed by International Gemological Institute (IGI). A laboratory grown diamond is one that has essentially the same chemical, physical and optical properties as a mined diamond, with the exception of being grown by man (a manufactured product).

© INTERNATIONAL GEMOLOGICAL INSTITUTE, INC.



LASERSCRIBE SM

12/28/2020
IGI Report Number LG468175714
Shape and Cutting Style PRINCESS CUT
Measurements 7.90 x 7.70 x 5.47 mm
GRADING RESULTS
Carat Weight 3.28 CARATS
Color Grade I
Clarity Grade VS 2



ADDITIONAL GRADING INFORMATION

Polish EXCELLENT
Symmetry EXCELLENT
Fluorescence NONE
Inscription(s) LABGROWN IGI LG468175714

Comments: This Chemical Vapor Deposition (CVD) laboratory grown diamond is classified as Type IIa.



IGI

12/28/2020
IGI Report No LG468175714
PRINCESS CUT
7.90 x 7.70 x 5.47 mm
3.28 CARATS
Color Grade I
Clarity Grade VS 2
Depth 71%
Table 70.5%
Girdle Extremely Thick
Culet Pointed
Polish EXCELLENT
Symmetry EXCELLENT
Fluorescence NONE
Inscription(s) LABGROWN IGI LG468175714
Comments: This Chemical Vapor Deposition (CVD) laboratory grown diamond is classified as Type IIa.