



LG468176588

LABORATORY GROWN DIAMOND REPORT

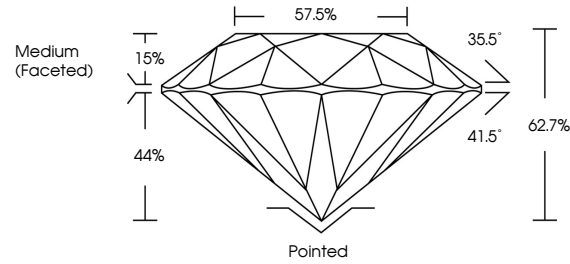
04/08/2021
IGI Report Number LG468176588
Shape and Cutting Style ROUND BRILLIANT
Measurements 8.46 - 8.51 x 5.31 mm

GRADING RESULTS
Carat Weight 2.33 CARATS
Color Grade J
Clarity Grade SI 1
Cut Grade EXCELLENT

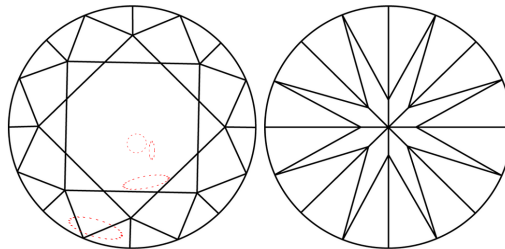
ADDITIONAL GRADING INFORMATION
Polish EXCELLENT
Symmetry EXCELLENT
Fluorescence NONE
Inscription(s) LABGROWN IGI LG468176588

Comments: This Laboratory Grown Diamond was created by Chemical Vapor Deposition (CVD) growth process and may include post-growth treatment Type IIa

PROPORTIONS



CLARITY CHARACTERISTICS



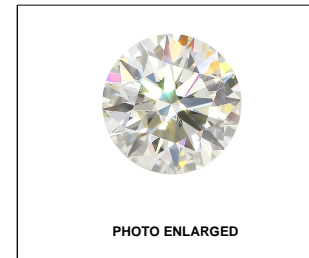
KEY TO SYMBOLS

Red symbols indicate internal characteristics.
Green symbols indicate external characteristics.

GRADING SCALES

Table with 5 columns: CL (Colorless D-F), NC (Near Colorless G-J), FT (Faint K-M), VLT (Very Light N-R), LT (Light S-Z). Rows include Color Grading Scale and Clarity (10x) Grading Scale.

The laboratory grown diamond described in this Report (Report) has been graded, tested, analyzed, examined and/or inscribed by International Gemological Institute (IGI). A laboratory grown diamond is one that has essentially the same chemical, physical and optical properties as a mined diamond...

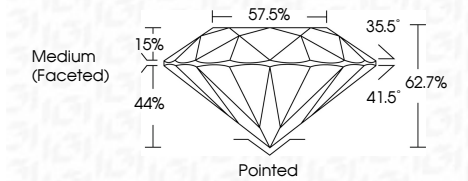


LABGROWN IGI LG468176588

LASERSCRIBE SM



04/08/2021
IGI Report Number LG468176588
Shape and Cutting Style ROUND BRILLIANT
Measurements 8.46 - 8.51 x 5.31 mm
GRADING RESULTS
Carat Weight 2.33 CARATS
Color Grade J
Clarity Grade SI 1
Cut Grade EXCELLENT



ADDITIONAL GRADING INFORMATION
Polish EXCELLENT
Symmetry EXCELLENT
Fluorescence NONE
Inscription(s) LABGROWN IGI LG468176588

Comments: This Laboratory Grown Diamond was created by Chemical Vapor Deposition (CVD) growth process and may include post-growth treatment Type IIa



IGI

04/08/2021
IGI Report No LG468176588
ROUND BRILLIANT
8.46 - 8.51 x 5.31 mm
2.33 CARATS
Color Grade J
Clarity Grade SI 1
Depth 62.7%
Table 57.5%
Grade Medium (Faceted)
Culet Pointed
Polish EXCELLENT
Symmetry EXCELLENT
Fluorescence NONE
Inscription(s) LABGROWN IGI LG468176588
Comments: This Laboratory Grown Diamond was created by Chemical Vapor Deposition (CVD) growth process and may include post-growth treatment Type IIa

