



ELECTRONIC COPY

LABORATORY GROWN DIAMOND REPORT

LG470120251

Report verification at igi.org

LABORATORY GROWN DIAMOND REPORT

LABORATORY GROWN DIAMOND REPORT

LABORATORY GROWN DIAMOND REPORT

April 7, 2021
IGI Report Number LG470120251
Description LABORATORY GROWN DIAMOND
Shape and Cutting Style ROUND BRILLIANT
Measurements 8.13 - 8.25 X 4.76 MM

GRADING RESULTS

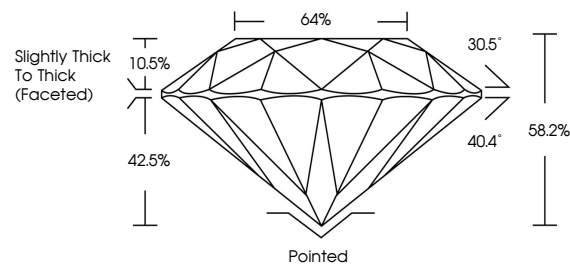
Carat Weight 2.00 CARATS
Color Grade H
Clarity Grade VS 2
Cut Grade VERY GOOD

ADDITIONAL GRADING INFORMATION

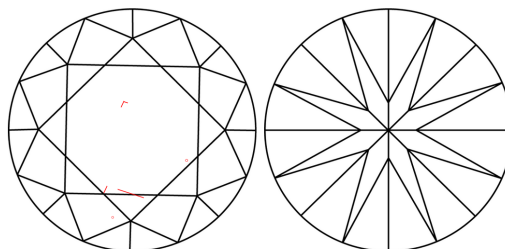
Polish EXCELLENT
Symmetry EXCELLENT
Fluorescence NONE
Inscription(s) LABGROWN (IGI) LG470120251

Comments: This Laboratory Grown Diamond was created by Chemical Vapor Deposition (CVD) growth process and may include post-growth treatment. Type IIa

PROPORTIONS



CLARITY CHARACTERISTICS



KEY TO SYMBOLS

Red symbols indicate internal characteristics.
Green symbols indicate external characteristics.

GRADING SCALES

CLARITY

Table with 5 columns: IF, VVS 1-2, VS 1-2, SI 1-2, I 1-3. Row 1: Internally Flawless, Very Very Slightly Included, Very Slightly Included, Slightly Included, Included.

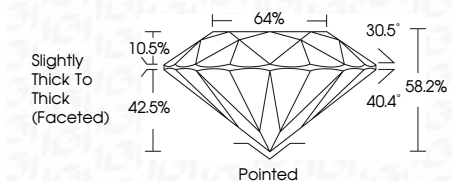
COLOR

Table with 7 columns: D, E, F, G, H, I, J, Faint, Very Light, Light.

April 7, 2021
IGI Report Number LG470120251
Description LABORATORY GROWN DIAMOND
Shape and Cutting Style ROUND BRILLIANT
Measurements 8.13 - 8.25 X 4.76 MM

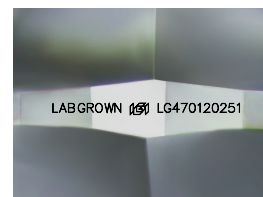
GRADING RESULTS

Carat Weight 2.00 CARATS
Color Grade H
Clarity Grade VS 2
Cut Grade VERY GOOD



ADDITIONAL GRADING INFORMATION

Polish EXCELLENT
Symmetry EXCELLENT
Fluorescence NONE
Inscription(s) LABGROWN (IGI) LG470120251
Comments: This Laboratory Grown Diamond was created by Chemical Vapor Deposition (CVD) growth process and may include post-growth treatment. Type IIa



Sample Image Used



IGI

April 7, 2021
IGI Report No LG470120251
ROUND BRILLIANT
8.13 - 8.25 X 4.76 MM
2.00 CARATS H
Color Grade VS 2
Very Good
Cut Grade 88.2%
64%
Slightly Thick To Thick (Faceted)
Pointed
EXCELLENT
EXCELLENT
NONE
LABGROWN (IGI) LG470120251
Comments: This Laboratory Grown Diamond was created by Chemical Vapor Deposition (CVD) growth process and may include post-growth treatment. Type IIa