



LG470150087

LABORATORY GROWN DIAMOND REPORT

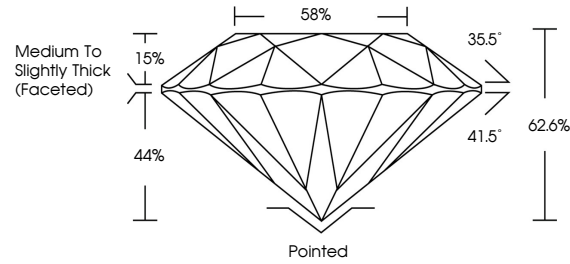
04/24/2021
IGI Report Number LG470150087
Shape and Cutting Style ROUND BRILLIANT
Measurements 7.45 - 7.52 x 4.70 mm

GRADING RESULTS
Carat Weight 1.62 CARAT
Color Grade H
Clarity Grade SI 1
Cut Grade EXCELLENT

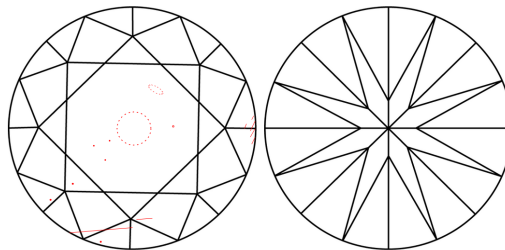
ADDITIONAL GRADING INFORMATION
Polish EXCELLENT
Symmetry EXCELLENT
Fluorescence NONE
Inscription(s) LABGROWN IGI LG470150087

Comments: This Laboratory Grown Diamond was created by Chemical Vapor Deposition (CVD) growth process and may include post-growth treatment Type IIa

PROPORTIONS



CLARITY CHARACTERISTICS



KEY TO SYMBOLS

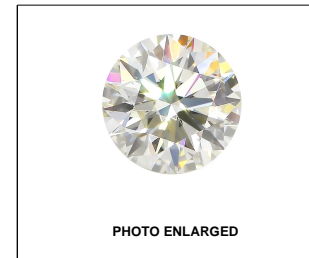
Red symbols indicate internal characteristics.
Green symbols indicate external characteristics.

GRADING SCALES

Table with 5 columns for Color (CL, NC, FT, VLT, LT) and Clarity (FL, IF, VVS, VS, SI, I) grading scales.

The laboratory grown diamond described in this Report (Report) has been graded, tested, analyzed, examined and/or inscribed by International Gemological Institute (IGI). A laboratory grown diamond is one that has essentially the same chemical, physical and optical properties as a mined diamond...

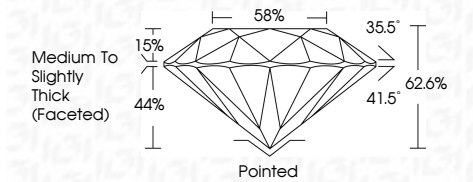
© INTERNATIONAL GEMOLOGICAL INSTITUTE, INC.



LABGROWN IGI LG470150087

LASERSCRIBE SM

04/24/2021
IGI Report Number LG470150087
Shape and Cutting Style ROUND BRILLIANT
Measurements 7.45 - 7.52 x 4.70 mm
GRADING RESULTS
Carat Weight 1.62 CARAT
Color Grade H
Clarity Grade SI 1
Cut Grade EXCELLENT



ADDITIONAL GRADING INFORMATION
Polish EXCELLENT
Symmetry EXCELLENT
Fluorescence NONE
Inscription(s) LABGROWN IGI LG470150087

Comments: This Laboratory Grown Diamond was created by Chemical Vapor Deposition (CVD) growth process and may include post-growth treatment Type IIa



IGI

04/24/2021
IGI Report No LG470150087
ROUND BRILLIANT
Carat Weight 1.62 CARAT
Color Grade H
Clarity Grade SI 1
Depth 62.6%
Table 58%
Girdle Medium To Slightly Thick (Faceted)
Culet Pointed
Polish EXCELLENT
Symmetry EXCELLENT
Fluorescence NONE
Inscription(s) LABGROWN IGI LG470150087
Comments: This Laboratory Grown Diamond was created by Chemical Vapor Deposition (CVD) growth process and may include post-growth treatment Type IIa

