



LG470150871

LABORATORY GROWN DIAMOND REPORT

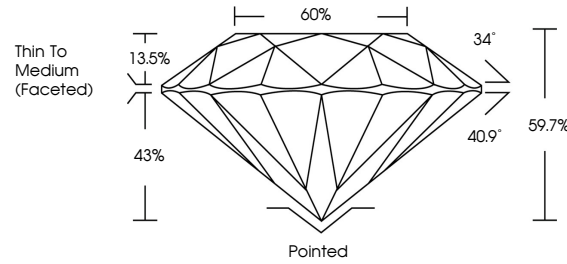
04/29/2021
IGI Report Number LG470150871
Shape and Cutting Style ROUND BRILLIANT
Measurements 6.93 - 6.96 x 4.14 mm

GRADING RESULTS
Carat Weight 1.21 CARAT
Color Grade I
Clarity Grade VVS 1
Cut Grade EXCELLENT

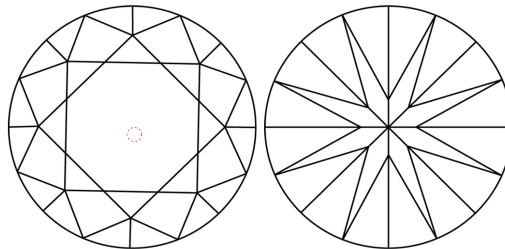
ADDITIONAL GRADING INFORMATION
Polish EXCELLENT
Symmetry EXCELLENT
Fluorescence NONE
Inscription(s) LABGROWN IGI LG470150871

Comments: This Laboratory Grown Diamond was created by Chemical Vapor Deposition (CVD) growth process and may include post-growth treatment Type IIa

PROPORTIONS



CLARITY CHARACTERISTICS



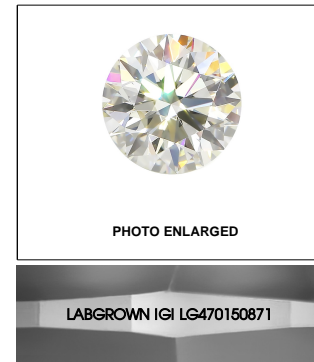
KEY TO SYMBOLS

Red symbols indicate internal characteristics.
Green symbols indicate external characteristics.

GRADING SCALES

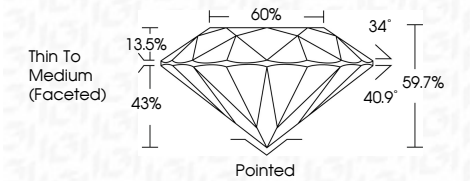
Table with 5 columns for Color Grading Scale (CL to LT) and Clarity (10x) Grading Scale (FL to I).

The laboratory grown diamond described in this Report (Report) has been graded, tested, analyzed, examined and/or inscribed by International Gemological Institute (IGI). A laboratory grown diamond is one that has essentially the same chemical, physical and optical properties as a mined diamond...



LASERSCRIBE SM

04/29/2021
IGI Report Number LG470150871
Shape and Cutting Style ROUND BRILLIANT
Measurements 6.93 - 6.96 x 4.14 mm
GRADING RESULTS
Carat Weight 1.21 CARAT
Color Grade I
Clarity Grade VVS 1
Cut Grade EXCELLENT



ADDITIONAL GRADING INFORMATION
Polish EXCELLENT
Symmetry EXCELLENT
Fluorescence NONE
Inscription(s) LABGROWN IGI LG470150871

Comments: This Laboratory Grown Diamond was created by Chemical Vapor Deposition (CVD) growth process and may include post-growth treatment Type IIa



IGI

04/29/2021
IGI Report No LG470150871
ROUND BRILLIANT
6.93 - 6.96 x 4.14 mm
Carat Weight 1.21 CARAT
Color Grade I
Clarity Grade VVS 1
Cut Grade EXCELLENT
Depth 59.7%
Table 60%
Girdle Thin To Medium (Faceted)
Culet Pointed
Polish EXCELLENT
Symmetry EXCELLENT
Fluorescence NONE
Inscription(s) LABGROWN IGI LG470150871
Comments: This Laboratory Grown Diamond was created by Chemical Vapor Deposition (CVD) growth process and may include post-growth treatment Type IIa

