



LG470152118

LABORATORY GROWN DIAMOND REPORT

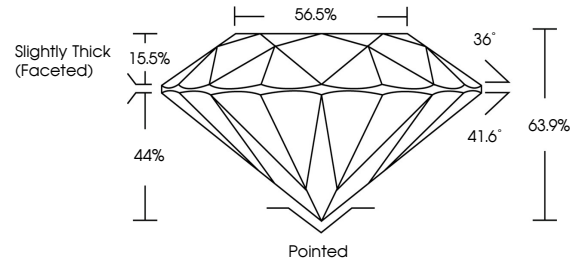
05/05/2021
IGI Report Number LG470152118
Shape and Cutting Style ROUND BRILLIANT
Measurements 7.29 - 7.35 x 4.69 mm

GRADING RESULTS
Carat Weight 1.56 CARAT
Color Grade I
Clarity Grade VVS 2
Cut Grade VERY GOOD

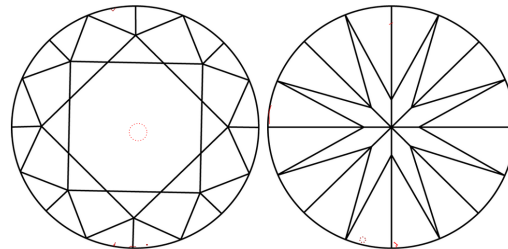
ADDITIONAL GRADING INFORMATION
Polish VERY GOOD
Symmetry EXCELLENT
Fluorescence NONE
Inscription(s) LABGROWN IGI LG470152118

Comments: This Laboratory Grown Diamond was created by Chemical Vapor Deposition (CVD) growth process and may include post-growth treatment Type IIa

PROPORTIONS



CLARITY CHARACTERISTICS



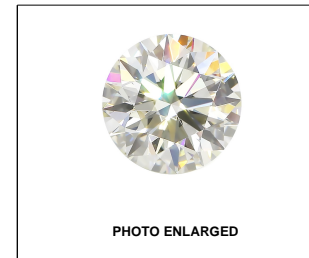
KEY TO SYMBOLS

Red symbols indicate internal characteristics.
Green symbols indicate external characteristics.

GRADING SCALES

Table with 5 columns for Color Grading Scale (CL to LT) and Clarity (10x) Grading Scale (FL to I).

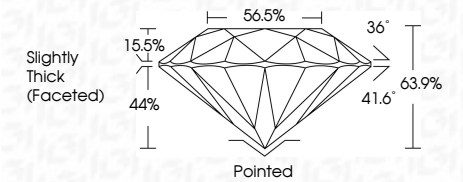
The laboratory grown diamond described in this Report (Report) has been graded, tested, analyzed, examined and/or inscribed by International Gemological Institute (IGI). A laboratory grown diamond is one that has essentially the same chemical, physical and optical properties as a mined diamond...



LABGROWN IGI LG470152118

LASERSCRIBE SM

05/05/2021
IGI Report Number LG470152118
Shape and Cutting Style ROUND BRILLIANT
Measurements 7.29 - 7.35 x 4.69 mm
GRADING RESULTS
Carat Weight 1.56 CARAT
Color Grade I
Clarity Grade VVS 2
Cut Grade VERY GOOD



ADDITIONAL GRADING INFORMATION
Polish VERY GOOD
Symmetry EXCELLENT
Fluorescence NONE
Inscription(s) LABGROWN IGI LG470152118

Comments: This Laboratory Grown Diamond was created by Chemical Vapor Deposition (CVD) growth process and may include post-growth treatment Type IIa



IGI

05/05/2021
IGI Report No. LG470152118
ROUND BRILLIANT
7.29 - 7.35 x 4.69 mm
1.56 CARAT
Color Grade I
Clarity Grade VVS 2
Cut Grade VERY GOOD
Depth 63.9%
Table 56.5%
Girdle Slightly Thick (Faceted)
Polish Pointed
Symmetry VERY GOOD
Fluorescence EXCELLENT
Inscription(s) NONE
LABGROWN IGI LG470152118
Comments: This Laboratory Grown Diamond was created by Chemical Vapor Deposition (CVD) growth process and may include post-growth treatment Type IIa