



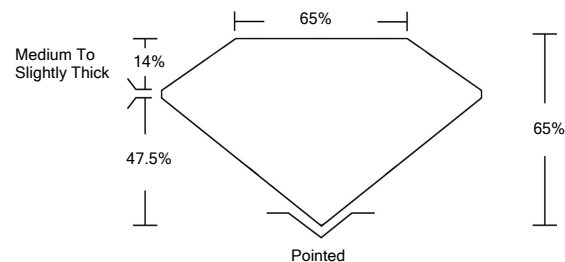
LABORATORY GROWN DIAMOND REPORT

LG472161312

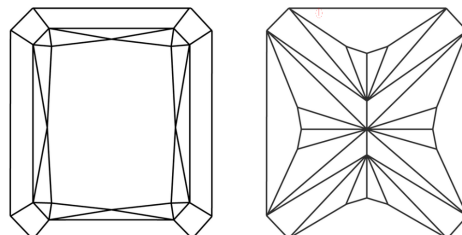
GRADING SCALES

COLOR GRADING SCALE	CL	NC	FT	VL	LT	
	COLORLESS D-F	NEAR COLORLESS G-J	FAINT K-M	VERY LIGHT N-R	LIGHT S-Z	
CLARITY (10x) GRADING SCALE	FL	IF	VVS	VS	SI	I
	FLAWLESS INTERNALLY FLAWLESS	VERY VERY SLIGHTLY INCLUDED	VERY SLIGHTLY INCLUDED	SLIGHTLY INCLUDED	INCLUDED	

PROPORTIONS

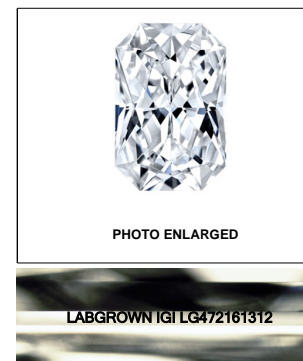


CLARITY CHARACTERISTICS



KEY TO SYMBOLS

Red symbols indicate internal characteristics.
Green symbols indicate external characteristics.



LASERSCRIBESM

04/22/2021

IGI Report Number

LG472161312

Shape and Cutting Style

**CUT CORNERED
RECTANGULAR MODIFIED
BRILLIANT**

Measurements

7.70 x 6.00 x 3.90 mm

GRADING RESULTS

Carat Weight

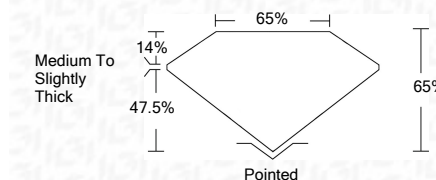
1.51 CARAT

Color Grade

D

Clarity Grade

VVS 2



ADDITIONAL GRADING INFORMATION

Polish

EXCELLENT

Symmetry

EXCELLENT

Fluorescence

NONE

Inscription(s)

LABGROWN IGI LG472161312

Comments: As Grown - No indication of post-growth treatment

This Laboratory Grown Diamond was created by Chemical Vapor Deposition (CVD) process
Type IIa



IGI

04/22/2021	IGI Report No. LG472161312	1.51 CARAT	D
	CUT CORNERED RECT. MODIFIED BRILLIANT	VVS 2	65%
	7.70x6.00x3.90 mm	65%	Medium To Slightly Thick
	Color Grade		Pointed
	Clarity Grade		EXCELLENT
	Depth		EXCELLENT
	Table		EXCELLENT
	Girdle		NONE
	Culet		LABGROWN IGI LG472161312
	Polish		
	Symmetry		
	Fluorescence		
	Inscription(s)		
	Comments:		

As Grown - No indication of post-growth treatment
This Laboratory Grown Diamond was created by Chemical Vapor Deposition (CVD) process
Type IIa

