



**INTERNATIONAL
GEMOLOGICAL
INSTITUTE**

ELECTRONIC COPY

**LABORATORY GROWN
DIAMOND REPORT**

LG472174836

**IGI LABORATORY GROWN
DIAMOND ID REPORT**

04/15/2021
IGI Report Number **LG472174836**
PEAR BRILLIANT
7.26 X 4.67 X 2.88 MM
Carat Weight 0.57 CARAT
Color Grade E
Clarity Grade VVS 2
Polish EXCELLENT
Symmetry VERY GOOD
Fluorescence NONE
Inscription(s) LABGROWN IGI
LG472174836

Comments: As Grown - No indication of post-growth treatment.
This Laboratory Grown Diamond was created by High Pressure High Temperature (HPHT) growth process.
Type II

LABORATORY GROWN DIAMOND REPORT

IGI LABORATORY GROWN DIAMOND IDENTIFICATION REPORT

04/15/2021
IGI Report Number **LG472174836**
Shape and Cutting Style **PEAR BRILLIANT**
Measurements **7.26 X 4.67 X 2.88 MM**

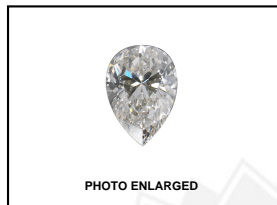
GRADING RESULTS

Carat Weight 0.57 CARAT
Color Grade E
Clarity Grade VVS 2

ADDITIONAL GRADING INFORMATION

Polish EXCELLENT
Symmetry VERY GOOD
Fluorescence NONE
Inscription(s) LABGROWN IGI LG472174836

Comments: As Grown - No indication of post-growth treatment.
This Laboratory Grown Diamond was created by High Pressure High Temperature (HPHT) growth process.
Type II



LASERSCRIBESM



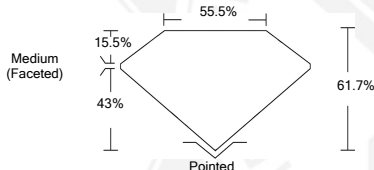
**IGI LABORATORY GROWN
DIAMOND ID REPORT**

04/15/2021
IGI Report Number **LG472174836**
PEAR BRILLIANT
7.26 X 4.67 X 2.88 MM
Carat Weight 0.57 CARAT
Color Grade E
Clarity Grade VVS 2
Polish EXCELLENT
Symmetry VERY GOOD
Fluorescence NONE
Inscription(s) LABGROWN IGI
LG472174836

Comments: As Grown - No indication of post-growth treatment.
This Laboratory Grown Diamond was created by High Pressure High Temperature (HPHT) growth process.
Type II

This Laboratory Grown Diamond (LGD) described in this Report has been analyzed, graded and Laserscribed[®] by International Gemological Institute (IGI). A LGD has essentially the chemical, physical and optical properties as a mined diamond, with the exception of being man-made (a manufactured product). LGD's are typically produced by CVD (chemical vapor deposition) or by HPHT (high pressure high temperature) growth processes and may include post growth modifications to change the color. IGI utilizes the most advanced techniques and equipment currently available including, binocular microscopes, diamond color masters, non-contact-optical measuring device, a wide range analytical techniques including FTIR, UV-VIS-NIR, raman spectroscopy, and fluorescence analysis at various excitation wavelengths. This Report includes advanced security features. This Report is neither a guarantee, valuation nor appraisal and by making the report IGI does not agree to purchase or replace the article.

INTERNATIONAL GEMOLOGICAL INSTITUTE, INC.



THIS DOCUMENT WAS PRODUCED WITH THE FOLLOWING SECURITY MEASURES: SPECIAL DOCUMENT PAPER, INK SCREENS, WATERMARK BACKGROUND DESIGN, HOLOGRAM AND OTHER SECURITY FEATURES NOT LISTED AND DO EXCEED DOCUMENT SECURITY INDUSTRY GUIDELINES.

For Terms & Conditions and to verify this report, please visit www.igi.org