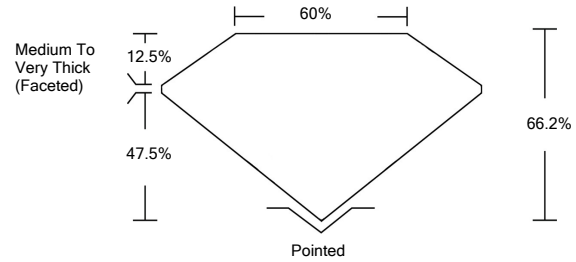




LG474109593

LABORATORY GROWN DIAMOND REPORT

PROPORTIONS



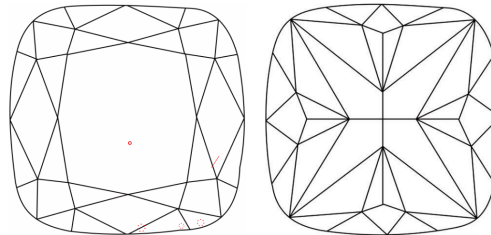
GRADING SCALES

Table with 5 columns for Color Grading Scale (CL, NC, FT, VLT, LT) and Clarity (10x) Grading Scale (FL, IF, VVS, VS, SI, I).

The laboratory grown diamond described in this Report (Report) has been graded, tested, analyzed, examined and/or inscribed by International Gemological Institute (IGI). A laboratory grown diamond is one that has essentially the same chemical, physical and optical properties as a mined diamond...

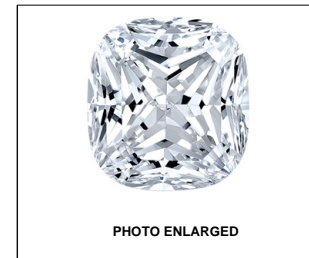
© INTERNATIONAL GEMOLOGICAL INSTITUTE, INC.

CLARITY CHARACTERISTICS



KEY TO SYMBOLS

Red symbols indicate internal characteristics. Green symbols indicate external characteristics.



LABGROWN IGI LG474109593

LASERSCRIBESM

04/23/2021

IGI Report Number LG474109593

Shape and Cutting Style SQUARE CUSHION BRILLIANT

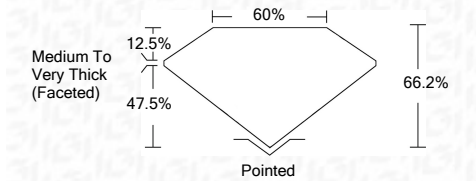
Measurements 7.76 x 7.66 x 5.07 mm

GRADING RESULTS

Carat Weight 2.40 CARATS

Color Grade G

Clarity Grade SI 1



ADDITIONAL GRADING INFORMATION

Polish VERY GOOD

Symmetry VERY GOOD

Fluorescence NONE

Inscription(s) LABGROWN IGI LG474109593

Comments: This Laboratory Grown Diamond was created by Chemical Vapor Deposition (CVD) growth process and may include post-growth treatment. Type IIa



IGI

04/23/2021 IGI Report No. LG474109593 SQUARE CUSHION BRILLIANT 7.76 x 7.66 x 5.07 mm 2.40 CARATS G SI 1 66.2% 60% Medium To Very Thick (Faceted) Pointed VERY GOOD VERY GOOD NONE LABGROWN IGI LG474109593

This Laboratory Grown Diamond was created by Chemical Vapor Deposition (CVD) growth process and may include post-growth treatment. Type IIa

