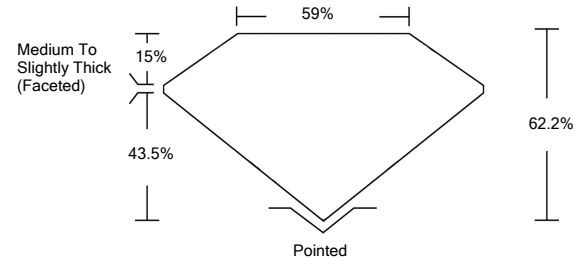




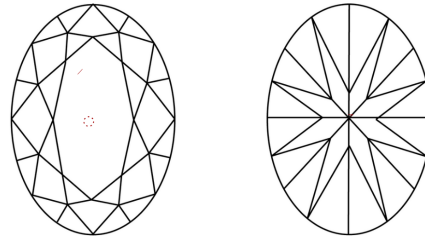
LG474110794

LABORATORY GROWN DIAMOND REPORT

PROPORTIONS



CLARITY CHARACTERISTICS



KEY TO SYMBOLS

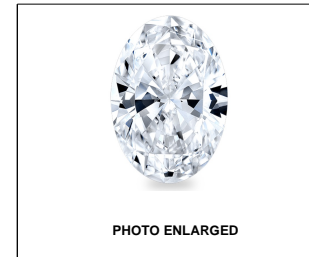
Red symbols indicate internal characteristics. Green symbols indicate external characteristics.

GRADING SCALES

Table with 5 columns for Color Grading Scale (CL to LT) and Clarity (10x) Grading Scale (FL to I). Colorless D-F, Near Colorless G-J, Faint K-M, Very Light N-R, Light S-Z. Flawless Internally Flawless, Very Very Slightly Included, Very Slightly Included, Slightly Included, Included.

The laboratory grown diamond described in this Report (Report) has been graded, tested, analyzed, examined and/or inscribed by International Gemological Institute (IGI). A laboratory grown diamond is one that has essentially the same chemical, physical and optical properties as a mined diamond...

© INTERNATIONAL GEMOLOGICAL INSTITUTE, INC.



LABGROWN IGI LG474110794

LASERSCRIBESM

04/30/2021

IGI Report Number LG474110794

Shape and Cutting Style OVAL BRILLIANT

Measurements 14.86 x 10.71 x 6.66 mm

GRADING RESULTS

Carat Weight 6.62 CARATS

Color Grade D

Clarity Grade VVS 2

ADDITIONAL GRADING INFORMATION

Polish EXCELLENT

Symmetry EXCELLENT

Fluorescence NONE

Inscription(s) LABGROWN IGI LG474110794

Comments: As Grown - No indication of post-growth treatment.

This Laboratory Grown Diamond was created by High Pressure High Temperature (HPHT) growth process. Type II



IGI

04/30/2021 IGI Report No. LG474110794 OVAL BRILLIANT 14.86 x 10.71 x 6.66 mm 6.62 CARATS D VVS 2 62.2% 59% Medium To Slightly Thick (Faceted) Pointed EXCELLENT EXCELLENT NONE LABGROWN IGI LG474110794

As Grown - No indication of post-growth treatment. This Laboratory Grown Diamond was created by High Pressure High Temperature (HPHT) growth process. Type II

