



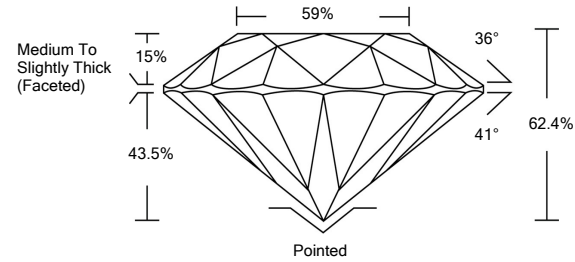
LABORATORY GROWN DIAMOND REPORT

LG474112376

GRADING SCALES

Table with 5 columns for Color Grading Scale (CL, NC, FT, VLT, LT) and Clarity (10x) Grading Scale (FL, IF, VVS, VS, SI, I).

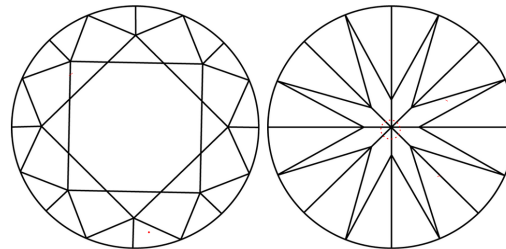
PROPORTIONS



The laboratory grown diamond described in this Report (Report) has been graded, tested, analyzed, examined and/or inscribed by International Gemological Institute (IGI). A laboratory grown diamond is one that has essentially the same chemical, physical and optical properties as a mined diamond...

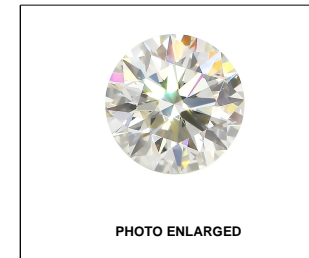
© INTERNATIONAL GEMOLOGICAL INSTITUTE, INC.

CLARITY CHARACTERISTICS



KEY TO SYMBOLS

Red symbols indicate internal characteristics. Green symbols indicate external characteristics.



LABGROWN IGI LG474112376

LASERSCRIBE<sup>SM</sup>

05/03/2021

IGI Report Number LG474112376

Shape and Cutting Style ROUND BRILLIANT

Measurements 10.35 - 10.39 x 6.47 mm

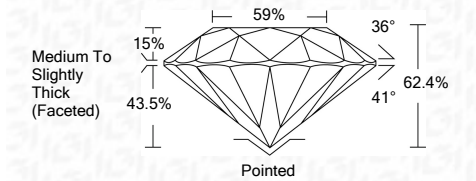
GRADING RESULTS

Carat Weight 4.34 CARATS

Color Grade E

Clarity Grade VVS 2

Cut Grade IDEAL



ADDITIONAL GRADING INFORMATION

Polish EXCELLENT

Symmetry EXCELLENT

Fluorescence NONE

Inscription(s) LABGROWN IGI LG474112376

Comments: As Grown - No indication of post-growth treatment. This Laboratory Grown Diamond was created by High Pressure High Temperature (HPHT) growth process. Type II



IGI

05/03/2021 IGI Report No. LG474112376 ROUND BRILLIANT 10.35 - 10.39 x 6.47 mm 4.34 CARATS E VVS 2 IDEAL 62.4% 59% Medium To Slightly Thick (Faceted) Pointed EXCELLENT EXCELLENT NONE LABGROWN IGI LG474112376