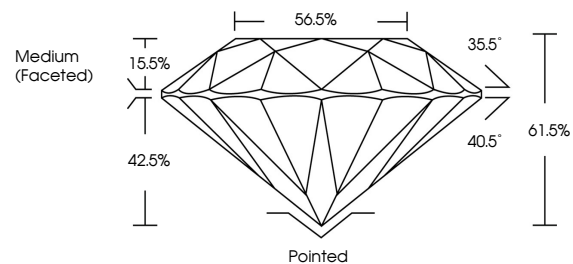




LABORATORY GROWN DIAMOND REPORT

LG474131496

PROPORTIONS



GRADING SCALES

| | | | | | | |
|-----------------------------|------------------------------|-----------------------------|------------------------|-------------------|-----------|---|
| COLOR GRADING SCALE | CL | NC | FT | VL | LT | |
| | COLORLESS D-F | NEAR COLORLESS G-J | FAINT K-M | VERY LIGHT N-R | LIGHT S-Z | |
| CLARITY (10x) GRADING SCALE | FL | IF | VVS | VS | SI | I |
| | FLAWLESS INTERNALLY FLAWLESS | VERY VERY SLIGHTLY INCLUDED | VERY SLIGHTLY INCLUDED | SLIGHTLY INCLUDED | INCLUDED | |

05/21/2021

IGI Report Number **LG474131496**

Shape and Cutting Style **ROUND BRILLIANT**

Measurements **5.96 - 6.01 x 3.68 mm**

GRADING RESULTS

Carat Weight **0.80 CARAT**

Color Grade **E**

Clarity Grade **VVS 1**

Cut Grade **IDEAL**

05/21/2021

IGI Report Number **LG474131496**

Shape and Cutting Style **ROUND BRILLIANT**

Measurements **5.96 - 6.01 x 3.68 mm**

GRADING RESULTS

Carat Weight **0.80 CARAT**

Color Grade **E**

Clarity Grade **VVS 1**

Cut Grade **IDEAL**

ADDITIONAL GRADING INFORMATION

Polish **EXCELLENT**

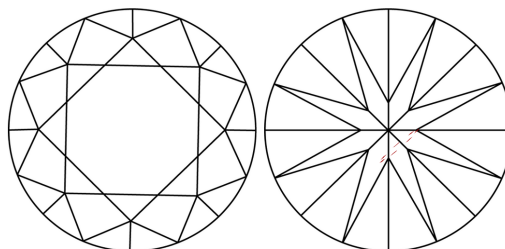
Symmetry **EXCELLENT**

Fluorescence **NONE**

Inscription(s) **LABGROWN IGI LG474131496**

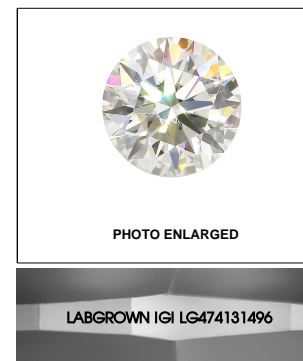
Comments: As Grown - No indication of post-growth treatment
This Laboratory Grown Diamond was created by High Pressure High Temperature (HPHT) growth process Type II

CLARITY CHARACTERISTICS

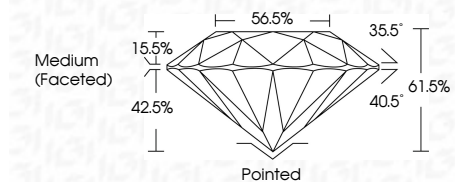


KEY TO SYMBOLS

Red symbols indicate internal characteristics.
Green symbols indicate external characteristics.



LASERSCRIBESM



ADDITIONAL GRADING INFORMATION

Polish **EXCELLENT**

Symmetry **EXCELLENT**

Fluorescence **NONE**

Inscription(s) **LABGROWN IGI LG474131496**

Comments: As Grown - No indication of post-growth treatment
This Laboratory Grown Diamond was created by High Pressure High Temperature (HPHT) growth process Type II



IGI

| | | | |
|----------------------------|------------|------------------|--|
| IGI Report No. LG474131496 | 0.80 CARAT | E | Pointed |
| ROUND BRILLIANT | VVS 1 | IDEAL | EXCELLENT |
| 5.96 - 6.01 x 3.68 mm | Cut Grade | 61.5% | EXCELLENT |
| Carat Weight | Depth | 56.5% | NONE |
| Color Grade | Table | Medium (Faceted) | LABGROWN IGI LG474131496 |
| Clarity Grade | Grade | | Comments: As Grown - No indication of post-growth treatment This Laboratory Grown Diamond was created by High Pressure High Temperature (HPHT) growth process Type II |
| Polish | | | |
| Symmetry | | | |
| Fluorescence | | | |
| Inscription(s) | | | |