



LG474138127

LABORATORY GROWN DIAMOND REPORT

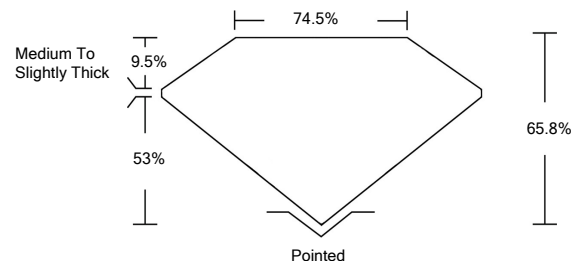
05/07/2021
IGI Report Number LG474138127
Shape and Cutting Style PRINCESS CUT
Measurements 8.61 x 8.47 x 5.57 mm
GRADING RESULTS
Carat Weight 3.63 CARATS
Color Grade H
Clarity Grade VS 1

ADDITIONAL GRADING INFORMATION

Polish EXCELLENT
Symmetry EXCELLENT
Fluorescence NONE
Inscription(s) LABGROWN IGI LG474138127

Comments: This Laboratory Grown Diamond was created by Chemical Vapor Deposition (CVD) growth process and may include post-growth treatment. Type IIa

PROPORTIONS



GRADING SCALES

Table with 2 main sections: COLOR GRADING SCALE (CL, NC, FT, VLT, LT) and CLARITY (10x) GRADING SCALE (FL, IF, VVS, VS, SI, I). Each section lists corresponding color/clarity names.

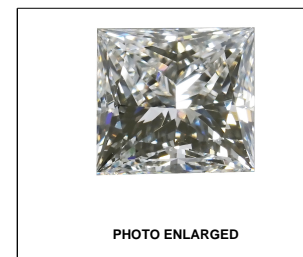


PHOTO ENLARGED



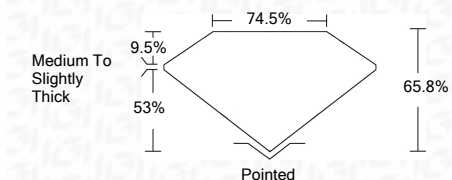
LASERSCRIBE SM

05/07/2021
IGI Report Number LG474138127
Shape and Cutting Style PRINCESS CUT
Measurements 8.61 x 8.47 x 5.57 mm
GRADING RESULTS
Carat Weight 3.63 CARATS
Color Grade H
Clarity Grade VS 1

ADDITIONAL GRADING INFORMATION

Polish EXCELLENT
Symmetry EXCELLENT
Fluorescence NONE
Inscription(s) LABGROWN IGI LG474138127

Comments: This Laboratory Grown Diamond was created by Chemical Vapor Deposition (CVD) growth process and may include post-growth treatment. Type IIa



The laboratory grown diamond described in this Report (Report) has been graded, tested, analyzed, examined and/or inscribed by International Gemological Institute (I.G.I.). A laboratory grown diamond is one that has essentially the same chemical, physical and optical properties as a mined diamond, with the exception of being grown by man (a manufactured product). I.G.I. employs and utilizes those techniques and equipment currently available to I.G.I., including, without limitation, 10X magnification, corrected triplet loupe, binocular microscope, master color comparison stones, non-contact-optical measuring device, Diamond Sure™, Diamond View™, Spectrophotometer and such other instruments and/or processes as deemed appropriate by I.G.I. This Report includes advanced security features. A duly accredited gemologist or jeweler can advise you with respect to the importance of and interrelationship between cut, color, clarity and carat weight. THIS REPORT IS NEITHER A GUARANTEE, VALUATION, NOR APPRAISAL OF THE GEMSTONE DESCRIBED HEREIN. PLEASE REVIEW THE LIMITATIONS AND RESTRICTIONS SET FORTH ONLINE. FOR ADDITIONAL INFORMATION, IMPORTANT LIMITATIONS AND DISCLAIMERS, PLEASE GO TO WWW.IGI.ORG OR CALL 1-888-BUY-IGIS.

© INTERNATIONAL GEMOLOGICAL INSTITUTE, INC.

THIS DOCUMENT WAS PRODUCED WITH THE FOLLOWING SECURITY MEASURES: SPECIAL DOCUMENT PAPER, INK SCREENS, WATERMARK BACKGROUND DESIGNS, HOLOGRAM AND OTHER SECURITY FEATURES NOT LISTED AND DO EXCEED DOCUMENT SECURITY INDUSTRY GUIDELINES.



05/07/2021
IGI Report No. LG474138127
PRINCESS CUT
8.61 x 8.47 x 5.57 mm
3.63 CARATS
H
VS 1
65.8%
74.5%
Medium To Slightly Thick
Pointed
EXCELLENT
EXCELLENT
NONE
LABGROWN IGI LG474138127
Comments: This Laboratory Grown Diamond was created by Chemical Vapor Deposition (CVD) growth process and may include post-growth treatment. Type IIa