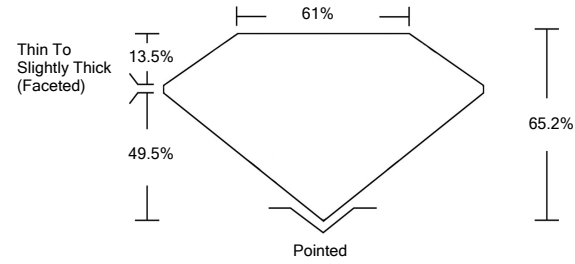




LG476153723

LABORATORY GROWN DIAMOND REPORT

PROPORTIONS



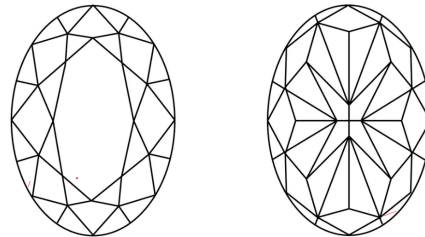
GRADING SCALES

Table with 5 columns for Color Grading Scale (CL, NC, FT, VLT, LT) and Clarity (10x) Grading Scale (FL, IF, VVS, VS, SI, I).

The laboratory grown diamond described in this Report (Report) has been graded, tested, analyzed, examined and/or inscribed by International Gemological Institute (IGI). A laboratory grown diamond is one that has essentially the same chemical, physical and optical properties as a mined diamond...

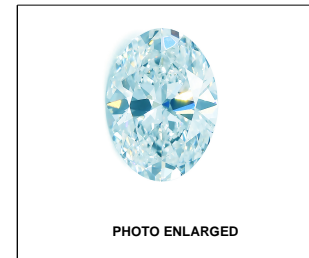
© INTERNATIONAL GEMOLOGICAL INSTITUTE, INC.

CLARITY CHARACTERISTICS



KEY TO SYMBOLS

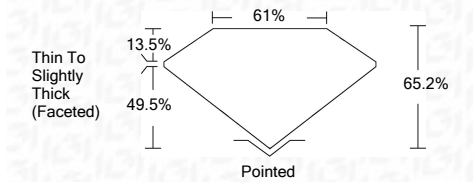
Red symbols indicate internal characteristics. Green symbols indicate external characteristics.



LABGROWN IGI LG476153723

LASERSCRIBESM

06/01/2021 IGI Report Number LG476153723 Shape and Cutting Style OVAL MODIFIED BRILLIANT Measurements 9.02 x 6.87 x 4.48 mm GRADING RESULTS Carat Weight 2.07 CARATS Color Grade FANCY VIVID GREENISH BLUE Clarity Grade VS 1



ADDITIONAL GRADING INFORMATION

Polish EXCELLENT Symmetry VERY GOOD Fluorescence NONE Inscription(s) LABGROWN IGI LG476153723

Comments: This Laboratory Grown Diamond was created by Chemical Vapor Deposition (CVD) growth process. Indications of post-growth treatment.



IGI

06/01/2021 IGI Report No. LG476153723 OVAL MODIFIED BRILLIANT 2.07 CARATS 9.02 x 6.87 x 4.48 mm Carat Weight FANCY VIVID GREENISH BLUE Color Grade VS 1 Depth 65.2% Table 61% Grade Thin To Slightly Thick (Faceted) Pointed EXCELLENT VERY GOOD NONE LABGROWN IGI LG476153723

This Laboratory Grown Diamond was created by Chemical Vapor Deposition (CVD) growth process. Indications of post-growth treatment.

