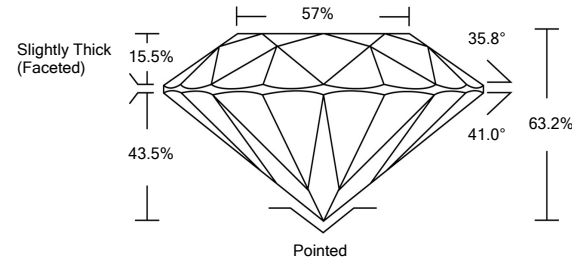




LG476157001

LABORATORY GROWN DIAMOND REPORT

PROPORTIONS

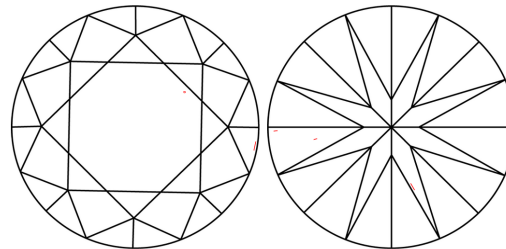


GRADING SCALES

Table with 5 columns for Color Grading Scale (CL to LT) and Clarity (10x) Grading Scale (FL to I).

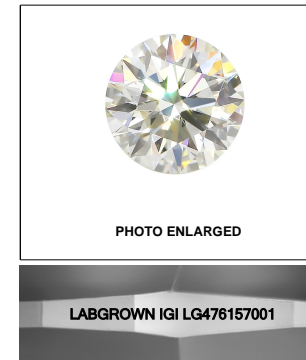
The laboratory grown diamond described in this Report (Report) has been graded, tested, analyzed, examined and/or inscribed by International Gemological Institute (IGI). A laboratory grown diamond is one that has essentially the same chemical, physical and optical properties as a mined diamond...

CLARITY CHARACTERISTICS



KEY TO SYMBOLS

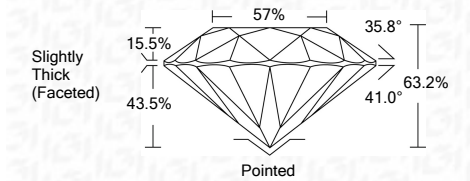
Red symbols indicate internal characteristics. Green symbols indicate external characteristics.



LASERSCRIBESM

05/11/2021

IGI Report Number LG476157001
Shape and Cutting Style ROUND BRILLIANT
Measurements 7.28 - 7.30 x 4.61 mm
GRADING RESULTS
Carat Weight 1.53 CARAT
Color Grade J
Clarity Grade VS 1
Cut Grade EXCELLENT



ADDITIONAL GRADING INFORMATION

Polish EXCELLENT
Symmetry EXCELLENT
Fluorescence NONE
Inscription(s) LABGROWN IGI LG476157001

Comments: This Laboratory Grown Diamond was created by Chemical Vapor Deposition (CVD) growth process and may include post-growth treatment. Type IIa



IGI

05/11/2021
IGI Report No. LG476157001
ROUND BRILLIANT
7.28 - 7.30 x 4.61 mm
1.53 CARAT
Color Grade J
Clarity Grade VS 1
Cut Grade EXCELLENT
Depth 63.2%
Table 57%
Slightly Thick (Faceted)
Pointed
EXCELLENT
EXCELLENT
NONE
LABGROWN IGI LG476157001
Comments: This Laboratory Grown Diamond was created by Chemical Vapor Deposition (CVD) growth process and may include post-growth treatment. Type IIa

