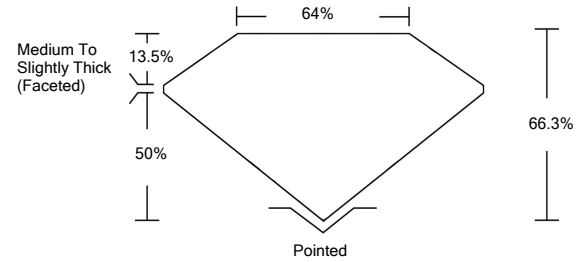




LG476157400

LABORATORY GROWN DIAMOND REPORT

PROPORTIONS

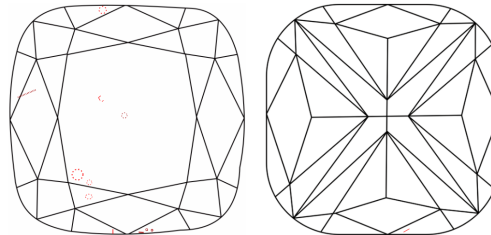


GRADING SCALES

Table with 5 columns for Color Grading Scale (CL, NC, FT, VLT, LT) and Clarity (10x) Grading Scale (FL, IF, VVS, VS, SI, I).

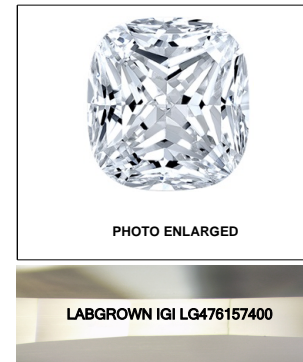
The laboratory grown diamond described in this Report (Report) has been graded, tested, analyzed, examined and/or inscribed by International Gemological Institute (IGI). A laboratory grown diamond is one that has essentially the same chemical, physical and optical properties as a mined diamond...

CLARITY CHARACTERISTICS



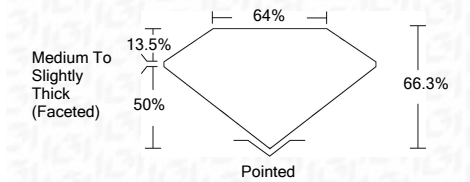
KEY TO SYMBOLS

Red symbols indicate internal characteristics. Green symbols indicate external characteristics.



LASERSCRIBESM

05/17/2021 IGI Report Number LG476157400 Shape and Cutting Style SQUARE CUSHION BRILLIANT Measurements 8.91 x 8.90 x 5.90 mm GRADING RESULTS Carat Weight 4.01 CARATS Color Grade H Clarity Grade VS 2



ADDITIONAL GRADING INFORMATION

Polish EXCELLENT Symmetry EXCELLENT Fluorescence NONE Inscription(s) LABGROWN IGI LG476157400

Comments: This Laboratory Grown Diamond was created by Chemical Vapor Deposition (CVD) growth process and may include post-growth treatment. Type IIa

05/17/2021 IGI Report Number LG476157400

Shape and Cutting Style SQUARE CUSHION BRILLIANT

Measurements 8.91 x 8.90 x 5.90 mm

GRADING RESULTS

Carat Weight 4.01 CARATS

Color Grade H

Clarity Grade VS 2

ADDITIONAL GRADING INFORMATION

Polish EXCELLENT

Symmetry EXCELLENT

Fluorescence NONE

Inscription(s) LABGROWN IGI LG476157400

Comments: This Laboratory Grown Diamond was created by Chemical Vapor Deposition (CVD) growth process and may include post-growth treatment. Type IIa



IGI

05/17/2021 IGI Report No. LG476157400 SQUARE CUSHION BRILLIANT 8.91 x 8.90 x 5.90 mm 4.01 CARATS H VS 2 66.3% 64% Medium To Slightly Thick (Faceted) Pointed EXCELLENT EXCELLENT NONE LABGROWN IGI LG476157400

This Laboratory Grown Diamond was created by Chemical Vapor Deposition (CVD) growth process and may include post-growth treatment. Type IIa