



05/19/2021	
IGI Report Number	LG476157677
Shape and Cutting Style	CUSHION BRILLIANT
Measurements	8.36 x 6.44 x 4.44 mm
GRADING RESULTS	
Carat Weight	2.01 CARATS
Color Grade	I
Clarity Grade	VS 1
ADDITIONAL GRADING INFORMATION	
Polish	EXCELLENT
Symmetry	EXCELLENT
Fluorescence	NONE
Inscription(s)	LABGROWN IGI LG476157677

LG476157677

Diagram illustrating the cross-section of a diamond-shaped object, showing dimensions and features:

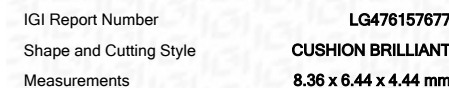
- Top width: 63%
- Height: 68.9%
- Top-left corner: 12.5% (Medium To Thick (Faceted))
- Bottom-left corner: 53.5%
- Bottom point: Pointed

Red symbols indicate internal characteristics.
Green symbols indicate external characteristics.

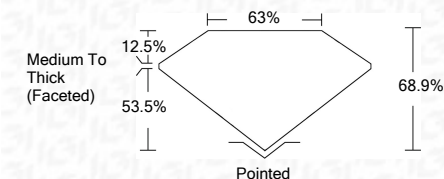
LABORATORY GROWN DIAMOND REPORT

COLOR GRADING SCALE	CL		NC		FT		VLT		LT	
	COLORLESS D-F		NEAR COLORLESS G-J		FAINT K-M		VERY LIGHT N-R		LIGHT S-Z	
CLARITY (10x) GRADING SCALE	FL	IF	VVS		VS		SI		I	
	FLAWLESS INTERNALLY FLAWLESS		VERY VERY SLIGHTLY INCLUDED		VERY SLIGHTLY INCLUDED		SLIGHTLY INCLUDED		INCLUDED	

© INTERNATIONAL GEMOLOGICAL INSTITUTE, INC.

LASERSCRIBESM

Carat Weight	2.01 CARATS
Color Grade	I
Clarity Grade	VS 1



Polish	EXCELLENT
Symmetry	EXCELLENT
Fluorescence	NONE
Inscription(s)	LABGROWN IGI LG476157677

Comments: This Laboratory Grown Diamond was created by Chemical Vapor Deposition (CVD) growth process and may include post-growth treatment.
Type IIa

