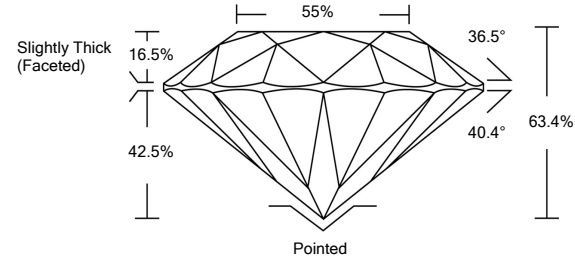




LG476158157

LABORATORY GROWN DIAMOND REPORT

PROPORTIONS



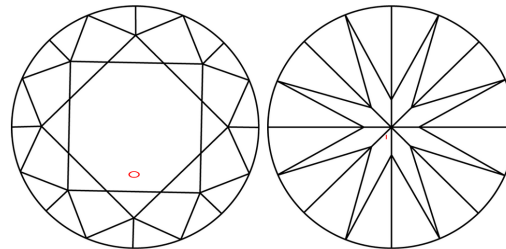
GRADING SCALES

Table with 5 columns for Color Grading Scale (CL to LT) and Clarity (10x) Grading Scale (FL to I). Includes descriptions like 'Colorless D-F', 'Near Colorless G-J', etc.

The laboratory grown diamond described in this Report (Report) has been graded, tested, analyzed, examined and/or inscribed by International Gemological Institute (IGI). A laboratory grown diamond is one that has essentially the same chemical, physical and optical properties as a mined diamond...

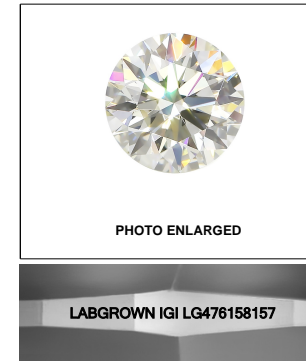
© INTERNATIONAL GEMOLOGICAL INSTITUTE, INC.

CLARITY CHARACTERISTICS



KEY TO SYMBOLS

Red symbols indicate internal characteristics. Green symbols indicate external characteristics.



LASERSCRIBESM

05/19/2021

IGI Report Number LG476158157

Shape and Cutting Style ROUND BRILLIANT

Measurements 7.21 - 7.25 x 4.58 mm

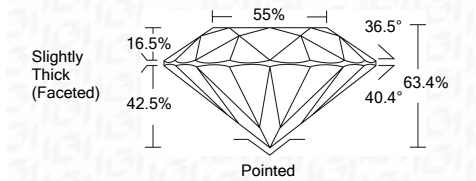
GRADING RESULTS

Carat Weight 1.50 CARAT

Color Grade D

Clarity Grade SI 2

Cut Grade EXCELLENT



ADDITIONAL GRADING INFORMATION

Polish EXCELLENT

Symmetry EXCELLENT

Fluorescence NONE

Inscription(s) LABGROWN IGI LG476158157

Comments: As Grown - No indication of post-growth treatment. This Laboratory Grown Diamond was created by High Pressure High Temperature (HPHT) growth process. Type II

05/19/2021

IGI Report Number LG476158157

Shape and Cutting Style ROUND BRILLIANT

Measurements 7.21 - 7.25 x 4.58 mm

GRADING RESULTS

Carat Weight 1.50 CARAT

Color Grade D

Clarity Grade SI 2

Cut Grade EXCELLENT

ADDITIONAL GRADING INFORMATION

Polish EXCELLENT

Symmetry EXCELLENT

Fluorescence NONE

Inscription(s) LABGROWN IGI LG476158157

Comments: As Grown - No indication of post-growth treatment.

This Laboratory Grown Diamond was created by High Pressure High Temperature (HPHT) growth process. Type II



IGI

Summary table of report details: IGI Report No. LG476158157, ROUND BRILLIANT, 7.21 - 7.25 x 4.58 mm, 1.50 CARAT, D, SI 2, EXCELLENT, 63.4%, 55%, Slightly Thick (Faceted), Pointed, EXCELLENT, EXCELLENT, NONE, LABGROWN IGI LG476158157.