



LG476158413

LABORATORY GROWN DIAMOND REPORT

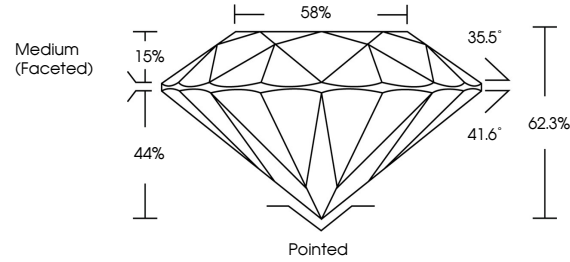
06/21/2021
IGI Report Number LG476158413
Shape and Cutting Style ROUND BRILLIANT
Measurements 6.66 - 6.69 x 4.16 mm

GRADING RESULTS
Carat Weight 1.13 CARAT
Color Grade F
Clarity Grade VVS 2
Cut Grade EXCELLENT

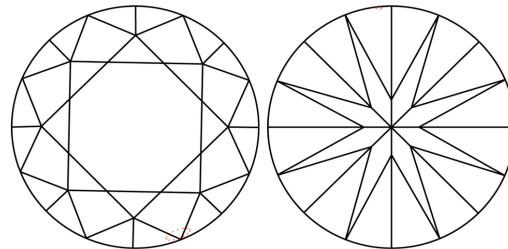
ADDITIONAL GRADING INFORMATION
Polish EXCELLENT
Symmetry EXCELLENT
Fluorescence NONE
Inscription(s) LABGROWN IGI LG476158413

Comments: This Laboratory Grown Diamond was created by Chemical Vapor Deposition (CVD) growth process and may include post-growth treatment Type IIa

PROPORTIONS



CLARITY CHARACTERISTICS



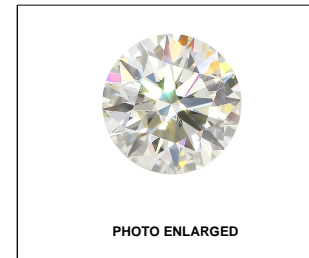
KEY TO SYMBOLS

Red symbols indicate internal characteristics.
Green symbols indicate external characteristics.

GRADING SCALES

Table with 5 columns for Color Grading Scale (CL to LT) and Clarity (10x) Grading Scale (FL to I).

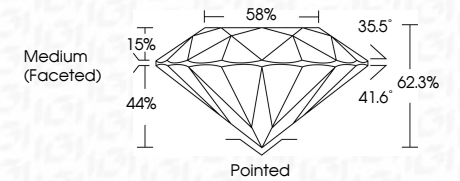
The laboratory grown diamond described in this Report (Report) has been graded, tested, analyzed, examined and/or inscribed by International Gemological Institute (IGI). A laboratory grown diamond is one that has essentially the same chemical, physical and optical properties as a mined diamond...



LABGROWN IGI LG476158413

LASERSCRIBE SM

06/21/2021
IGI Report Number LG476158413
Shape and Cutting Style ROUND BRILLIANT
Measurements 6.66 - 6.69 x 4.16 mm
GRADING RESULTS
Carat Weight 1.13 CARAT
Color Grade F
Clarity Grade VVS 2
Cut Grade EXCELLENT



ADDITIONAL GRADING INFORMATION
Polish EXCELLENT
Symmetry EXCELLENT
Fluorescence NONE
Inscription(s) LABGROWN IGI LG476158413

Comments: This Laboratory Grown Diamond was created by Chemical Vapor Deposition (CVD) growth process and may include post-growth treatment Type IIa



IGI

06/21/2021
IGI Report No. LG476158413
ROUND BRILLIANT
6.66 - 6.69 x 4.16 mm
1.13 CARAT
Color Grade F
Clarity Grade VVS 2
Cut Grade EXCELLENT
Depth 62.3%
Table 58%
Grade Medium (Faceted)
Pointed EXCELLENT
Polish EXCELLENT
Symmetry EXCELLENT
Fluorescence NONE
Inscription(s) LABGROWN IGI LG476158413
Comments: This Laboratory Grown Diamond was created by Chemical Vapor Deposition (CVD) growth process and may include post-growth treatment Type IIa