



06/10/2021	
IGI Report Number	LG476158750
Shape and Cutting Style	PRINCESS CUT
Measurements	6.66 x 6.61 x 4.77 mm
GRADING RESULTS	
Carat Weight	1.80 CARAT
Color Grade	H
Clarity Grade	VS 2
ADDITIONAL GRADING INFORMATION	
Polish	EXCELLENT
Symmetry	EXCELLENT
Fluorescence	NONE
Inscription(s)	LABGROWN IGI LG476158750

LG476158750

Medium

67%

11.5%

57.5%

72.2%

Pointed

Red symbols indicate internal characteristics.
Green symbols indicate external characteristics.

COLOR GRADING SCALE	CL		NC		FT		VLT		LT	
	COLORLESS D-F		NEAR COLORLESS G-J		FAINT K-M		VERY LIGHT N-R		LIGHT S-Z	
CLARITY (10x) GRADING SCALE	FL IF		VVS		VS		SI		I	
	FLAWLESS INTERNALLY FLAWLESS		VERY VERY SLIGHTLY INCLUDED		VERY SLIGHTLY INCLUDED		SLIGHTLY INCLUDED		INCLUDED	

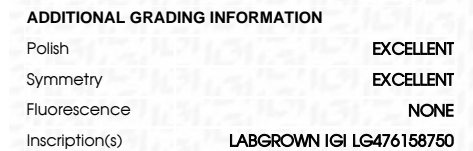
© INTERNATIONAL GEMOLOGICAL INSTITUTE, INC.



FD - 10 20

THIS DOCUMENT WAS PRODUCED WITH THE FOLLOWING SECURITY MEASURES: SPECIAL DOCUMENT PAPER, INK SCREENS, WATERMARK, BACKGROUND DESIGNS, HOLOGRAM AND OTHER SECURITY FEATURES NOT LISTED AND DO EXCEED DOCUMENT SECURITY INDUSTRY GUIDELINES

06/10/2021	
IGI Report Number	LG476158750
Shape and Cutting Style	PRINCESS CUT
Measurements	6.66 x 6.61 x 4.77 mm
GRADING RESULTS	
Carat Weight	1.80 CARAT
Color Grade	H
Clarity Grade	VS 2



Comments: This Laboratory Grown Diamond was created by Chemical Vapor Deposition (CVD) growth process and may include post-growth treatment Type IIa



IGI

06/10/2021	IGI Report No LG47618750		
PRINCESS CUT			
Weight	1.80 CARAT	VS 2	Polished
Color	H	72.2%	EXCELLENT
Clarity		67%	NONE
Depth		Medium	LAGSDOWN IGI
Carat Weight	1.80 CARAT		LG47618750
Color Grade			
Clarity Grade			
Depth			
Table			
Girdle			
Culet			
Polish			
Symmetry			
Fluorescence			
Inclusions(s)			
Comments:			
This Laboratory Grown Diamond was created by Chemical Vapor Deposition (CVD) growth process and may include post-growth treatment type IIa			

This Laboratory Grown Diamond was created by Chemical Vapor Deposition (CVD) growth process and may include post-growth treatment type IIa