



**INTERNATIONAL  
GEMOLOGICAL  
INSTITUTE**

**LABORATORY GROWN DIAMOND REPORT**

**IGI LABORATORY GROWN DIAMOND IDENTIFICATION REPORT**

06/28/2021  
 IGI Report Number LG476160105  
 Shape and Cutting Style EMERALD CUT  
 Measurements 5.80 X 4.38 X 2.91 MM

**GRADING RESULTS**

Carat Weight 0.70 CARAT  
 Color Grade J  
 Clarity Grade SI 1

**ADDITIONAL GRADING INFORMATION**

Polish VERY GOOD  
 Symmetry VERY GOOD  
 Fluorescence NONE  
 Inscription(s) LABGROWN IGI LG476160105

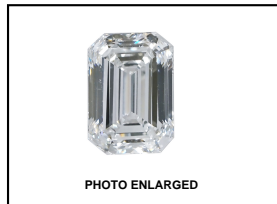
Comments: This Laboratory Grown Diamond was created by Chemical Vapor Deposition (CVD) growth process and may include post-growth treatment Type IIa

This Laboratory Grown Diamond (LGD) described in this Report has been analyzed, graded and Laserscribed® by International Gemological Institute (IGI). A LGD has essentially the chemical, physical and optical properties as a mined diamond, with the exception of being man-made (a manufactured product). LGD's are typically produced by CVD (chemical vapor deposition) or by HPHT (high pressure high temperature) growth processes and may include post growth modifications to change the color. IGI utilizes the most advanced techniques and equipment currently available including, binocular microscopes, diamond color masters, non-contact-optical measuring device, a wide range analytical techniques including FTIR, UV-VIS-NIR, raman spectroscopy, and fluorescence analysis at various excitation wavelengths. This Report includes advanced security features. This Report is neither a guarantee, valuation nor appraisal and by making the report IGI does not agree to purchase or replace the article.

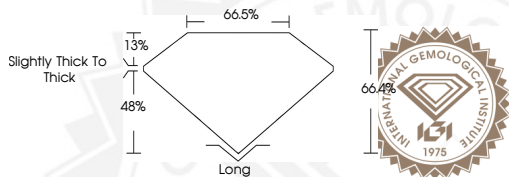
INTERNATIONAL GEMOLOGICAL INSTITUTE, INC

**ELECTRONIC COPY**

**LG476160105**



**LASERSCRIBE SM**



**IGI LABORATORY GROWN  
DIAMOND ID REPORT**

06/28/2021  
 IGI Report Number **LG476160105**  
**EMERALD CUT**  
**5.80 X 4.38 X 2.91 MM**  
 Carat Weight 0.70 CARAT  
 Color Grade J  
 Clarity Grade SI 1  
 Polish VERY GOOD  
 Symmetry VERY GOOD  
 Fluorescence NONE  
 Inscription(s) LABGROWN IGI  
 LG476160105

Comments: This Laboratory Grown Diamond was created by Chemical Vapor Deposition (CVD) growth process and may include post-growth treatment Type IIa

**IGI LABORATORY GROWN  
DIAMOND ID REPORT**

06/28/2021  
 IGI Report Number **LG476160105**  
**EMERALD CUT**  
**5.80 X 4.38 X 2.91 MM**  
 Carat Weight 0.70 CARAT  
 Color Grade J  
 Clarity Grade SI 1  
 Polish VERY GOOD  
 Symmetry VERY GOOD  
 Fluorescence NONE  
 Inscription(s) LABGROWN IGI  
 LG476160105

Comments: This Laboratory Grown Diamond was created by Chemical Vapor Deposition (CVD) growth process and may include post-growth treatment Type IIa

THIS DOCUMENT WAS PRODUCED WITH THE FOLLOWING SECURITY MEASURES: SPECIAL DOCUMENT PAPER, INK SCREENS, WATERMARK, BACKGROUND DESIGN, HOLOGRAM AND OTHER SECURITY FEATURES NOT LISTED AND DO EXCEED DOCUMENT SECURITY INDUSTRY GUIDELINES.

For Terms & Conditions and to verify this report, please visit [www.igi.org](http://www.igi.org)