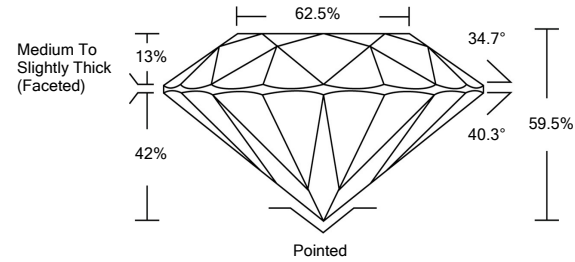




LG476186892

LABORATORY GROWN DIAMOND REPORT

PROPORTIONS

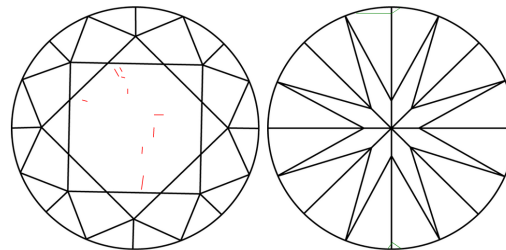


GRADING SCALES

Table with 5 columns for Color Grading Scale (CL, NC, FT, VLT, LT) and Clarity (10x) Grading Scale (FL, IF, VVS, VS, SI, I) with corresponding descriptions.

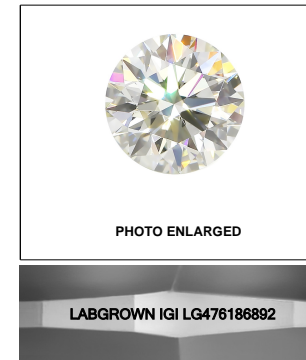
The laboratory grown diamond described in this Report (Report) has been graded, tested, analyzed, examined and/or inscribed by International Gemological Institute (IGI). A laboratory grown diamond is one that has essentially the same chemical, physical and optical properties as a mined diamond...

CLARITY CHARACTERISTICS



KEY TO SYMBOLS

Red symbols indicate internal characteristics. Green symbols indicate external characteristics.



LASERSCRIBE<sup>SM</sup>

05/21/2021

IGI Report Number LG476186892

Shape and Cutting Style ROUND BRILLIANT

Measurements 8.72 - 8.75 x 5.20 mm

GRADING RESULTS

Carat Weight 2.50 CARATS

Color Grade J

Clarity Grade SI 1

Cut Grade EXCELLENT

05/21/2021

IGI Report Number LG476186892

Shape and Cutting Style ROUND BRILLIANT

Measurements 8.72 - 8.75 x 5.20 mm

GRADING RESULTS

Carat Weight 2.50 CARATS

Color Grade J

Clarity Grade SI 1

Cut Grade EXCELLENT

ADDITIONAL GRADING INFORMATION

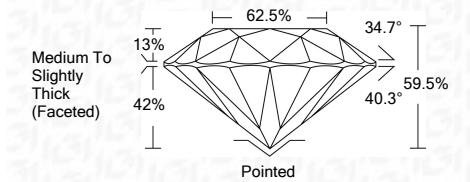
Polish EXCELLENT

Symmetry VERY GOOD

Fluorescence NONE

Inscription(s) LABGROWN IGI LG476186892

Comments: This Laboratory Grown Diamond was created by Chemical Vapor Deposition (CVD) growth process and may include post-growth treatment. Type IIa



ADDITIONAL GRADING INFORMATION

Polish EXCELLENT

Symmetry VERY GOOD

Fluorescence NONE

Inscription(s) LABGROWN IGI LG476186892

Comments: This Laboratory Grown Diamond was created by Chemical Vapor Deposition (CVD) growth process and may include post-growth treatment. Type IIa



IGI

Summary table of diamond specifications: IGI Report No. LG476186892, ROUND BRILLIANT, 8.72 - 8.75 x 5.20 mm, 2.50 CARATS, J, SI 1, EXCELLENT, 59.5%, 62.5%, Medium To Slightly Thick (Faceted), Pointed, EXCELLENT, VERY GOOD, NONE, LABGROWN IGI LG476186892.