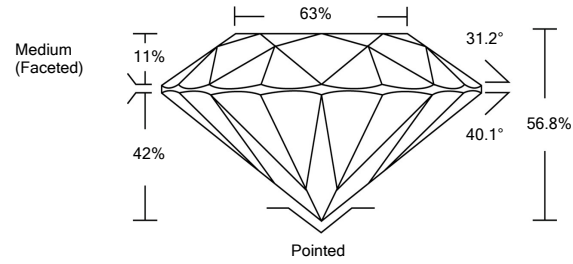




LG476187382

LABORATORY GROWN DIAMOND REPORT

PROPORTIONS

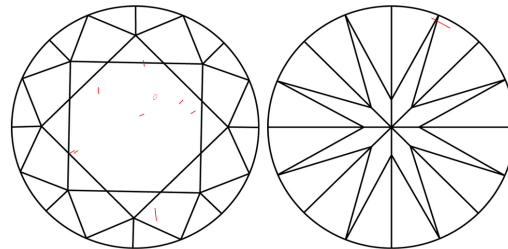


GRADING SCALES

Table with 5 columns: CL, NC, FT, VLT, LT and 2 rows: COLOR GRADING SCALE, CLARITY (10x) GRADING SCALE

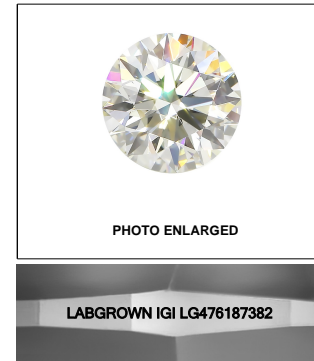
The laboratory grown diamond described in this Report (Report) has been graded, tested, analyzed, examined and/or inscribed by International Gemological Institute (IGI). A laboratory grown diamond is one that has essentially the same chemical, physical and optical properties as a mined diamond...

CLARITY CHARACTERISTICS



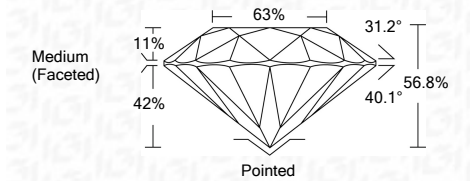
KEY TO SYMBOLS

Red symbols indicate internal characteristics. Green symbols indicate external characteristics.



LASERSCRIBESM

05/21/2021 IGI Report Number LG476187382 Shape and Cutting Style ROUND BRILLIANT Measurements 8.96 - 8.98 x 5.09 mm GRADING RESULTS Carat Weight 2.51 CARATS Color Grade I Clarity Grade VS 2 Cut Grade VERY GOOD



ADDITIONAL GRADING INFORMATION

Polish EXCELLENT Symmetry EXCELLENT Fluorescence NONE Inscription(s) LABGROWN IGI LG476187382

Comments: This Laboratory Grown Diamond was created by Chemical Vapor Deposition (CVD) growth process and may include post-growth treatment. Type IIa



IGI

05/21/2021 IGI Report No. LG476187382 ROUND BRILLIANT 8.96 - 8.98 x 5.09 mm 2.51 CARATS I VS 2 VERY GOOD 56.8% 63% Medium (Faceted) Pointed EXCELLENT EXCELLENT NONE LABGROWN IGI LG476187382