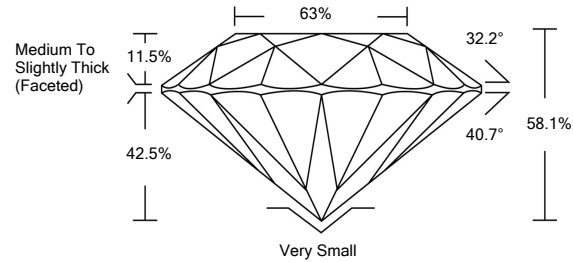




LG476187411

LABORATORY GROWN DIAMOND REPORT

PROPORTIONS

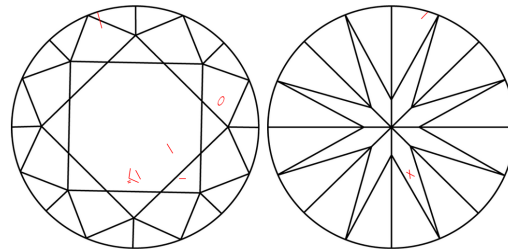


GRADING SCALES

Table with 5 columns: COLOR GRADING SCALE (CL, NC, FT, VLT, LT), CLARITY (10x) GRADING SCALE (FL, IF, VVS, VS, SI, I)

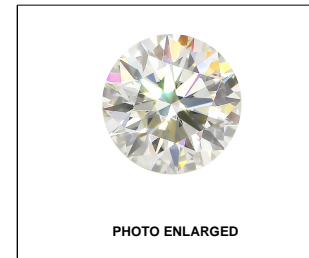
The laboratory grown diamond described in this Report (Report) has been graded, tested, analyzed, examined and/or inscribed by International Gemological Institute (IGI). A laboratory grown diamond is one that has essentially the same chemical, physical and optical properties as a mined diamond...

CLARITY CHARACTERISTICS



KEY TO SYMBOLS

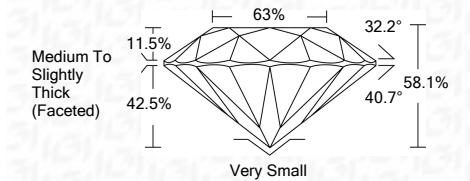
Red symbols indicate internal characteristics. Green symbols indicate external characteristics.



LABGROWN IGI LG476187411

LASERSCRIBESM

05/21/2021 IGI Report Number LG476187411 Shape and Cutting Style ROUND BRILLIANT Measurements 8.21 - 8.25 x 4.78 mm GRADING RESULTS Carat Weight 2.00 CARATS Color Grade I Clarity Grade SI 1 Cut Grade VERY GOOD



ADDITIONAL GRADING INFORMATION Polish EXCELLENT Symmetry VERY GOOD Fluorescence NONE Inscription(s) LABGROWN IGI LG476187411

Comments: This Laboratory Grown Diamond was created by Chemical Vapor Deposition (CVD) growth process and may include post-growth treatment. Type IIa



05/21/2021 IGI Report No. LG476187411 ROUND BRILLIANT 8.21 - 8.25 x 4.78 mm 2.00 CARATS I SI 1 VERY GOOD 88.1% 63% Medium To Slightly Thick (Faceted) Very Small EXCELLENT VERY GOOD NONE LABGROWN IGI LG476187411

THIS DOCUMENT WAS PRODUCED WITH THE FOLLOWING SECURITY MEASURES: SPECIAL DOCUMENT PAPER, INK SCREENS, WATERMARK BACKGROUND DESIGNS, HOLOGRAM AND OTHER SECURITY FEATURES NOT LISTED AND DO EXCEED DOCUMENT SECURITY INDUSTRY GUIDELINES.