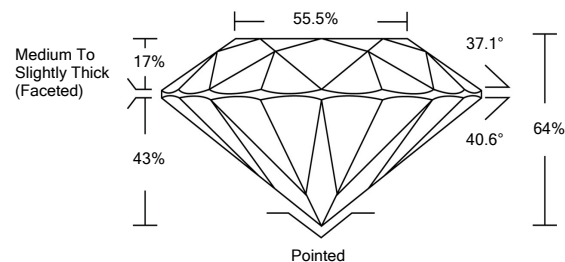




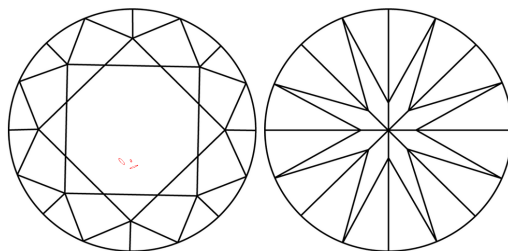
LG476187695

LABORATORY GROWN DIAMOND REPORT

PROPORTIONS



CLARITY CHARACTERISTICS



KEY TO SYMBOLS

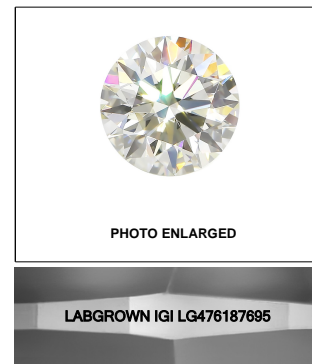
Red symbols indicate internal characteristics. Green symbols indicate external characteristics.

GRADING SCALES

Table with 5 columns for Color Grading Scale (CL, NC, FT, VLT, LT) and Clarity (10x) Grading Scale (FL, IF, VVS, VS, SI, I). Includes sub-labels like COLORLESS D-F, NEAR COLORLESS G-J, etc.

The laboratory grown diamond described in this Report (Report) has been graded, tested, analyzed, examined and/or inscribed by International Gemological Institute (IGI). A laboratory grown diamond is one that has essentially the same chemical, physical and optical properties as a mined diamond...

© INTERNATIONAL GEMOLOGICAL INSTITUTE, INC.



LASERSCRIBESM

05/20/2021

IGI Report Number LG476187695

Shape and Cutting Style ROUND BRILLIANT

Measurements 7.20 - 7.23 x 4.62 mm

GRADING RESULTS

Carat Weight 1.52 CARAT

Color Grade D

Clarity Grade VS 2

Cut Grade VERY GOOD

ADDITIONAL GRADING INFORMATION

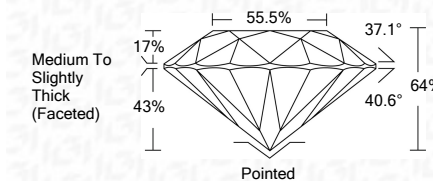
Polish EXCELLENT

Symmetry EXCELLENT

Fluorescence NONE

Inscription(s) LABGROWN IGI LG476187695

Comments: As Grown - No indication of post-growth treatment. This Laboratory Grown Diamond was created by High Pressure High Temperature (HPHT) growth process. Type II



IGI

Vertical table listing report details: 05/20/2021, IGI Report No. LG476187695, ROUND BRILLIANT, 7.20 - 7.23 x 4.62 mm, 1.52 CARAT, D, VS 2, VERY GOOD, 64%, 65.5%, Medium To Slightly Thick (Faceted), Pointed, EXCELLENT, EXCELLENT, NONE, LABGROWN IGI LG476187695, Comments: As Grown - No indication of post-growth treatment...

