



LABORATORY GROWN DIAMOND REPORT

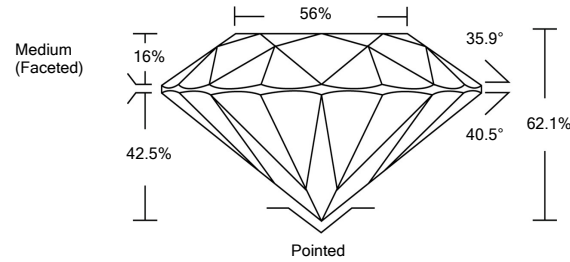
LG476188167

GRADING SCALES

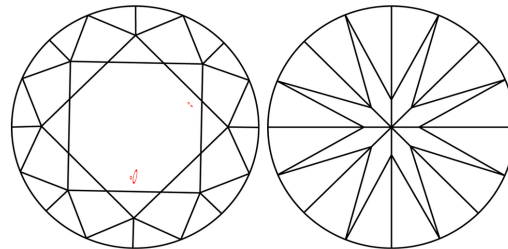
Table with 5 columns for Color Grading Scale (CL, NC, FT, VLT, LT) and Clarity (10x) Grading Scale (FL, IF, VVS, VS, SI, I).

The laboratory grown diamond described in this Report (Report) has been graded, tested, analyzed, examined and/or inscribed by International Gemological Institute (IGI). A laboratory grown diamond is one that has essentially the same chemical, physical and optical properties as a mined diamond...

PROPORTIONS

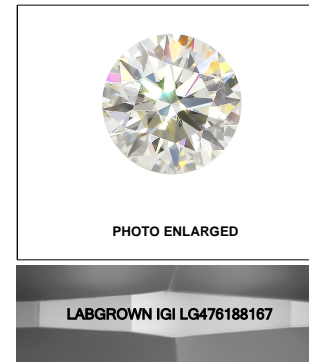


CLARITY CHARACTERISTICS



KEY TO SYMBOLS

Red symbols indicate internal characteristics. Green symbols indicate external characteristics.



05/24/2021

IGI Report Number LG476188167

Shape and Cutting Style ROUND BRILLIANT

Measurements 8.84 - 8.88 x 5.50 mm

GRADING RESULTS

Carat Weight 2.66 CARATS

Color Grade E

Clarity Grade VS 2

Cut Grade IDEAL

ADDITIONAL GRADING INFORMATION

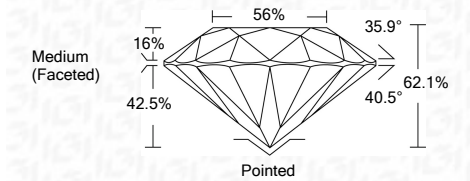
Polish EXCELLENT

Symmetry EXCELLENT

Fluorescence NONE

Inscription(s) LABGROWN IGI LG476188167

Comments: As Grown - No indication of post-growth treatment. This Laboratory Grown Diamond was created by High Pressure High Temperature (HPHT) growth process. Type II



IGI

Summary table of report details: 05/24/2021, IGI Report No. LG476188167, ROUND BRILLIANT, 8.84 - 8.88 x 5.50 mm, 2.66 CARATS, E, VS 2, IDEAL, 62.1%, 56%, Medium (Faceted), Pointed, EXCELLENT, EXCELLENT, NONE, LABGROWN IGI LG476188167.