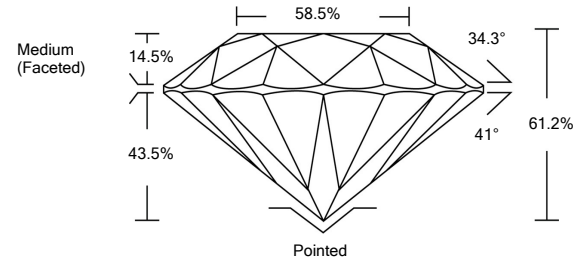




LG478109515

LABORATORY GROWN DIAMOND REPORT

PROPORTIONS



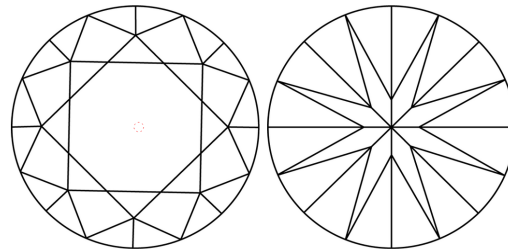
GRADING SCALES

Table with 5 columns for Color Grading Scale (CL, NC, FT, VLT, LT) and Clarity (10x) Grading Scale (FL, IF, VVS, VS, SI, I).

The laboratory grown diamond described in this Report (Report) has been graded, tested, analyzed, examined and/or inscribed by International Gemological Institute (IGI). A laboratory grown diamond is one that has essentially the same chemical, physical and optical properties as a mined diamond...

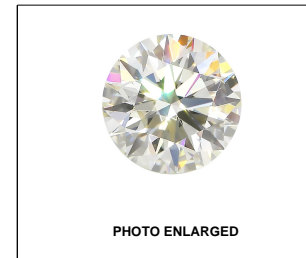
© INTERNATIONAL GEMOLOGICAL INSTITUTE, INC.

CLARITY CHARACTERISTICS



KEY TO SYMBOLS

Red symbols indicate internal characteristics. Green symbols indicate external characteristics.



LABGROWN IGI LG478109515

LASERSCRIBESM

06/07/2021

IGI Report Number LG478109515

Shape and Cutting Style ROUND BRILLIANT

Measurements 10.20 - 10.25 x 6.26 mm

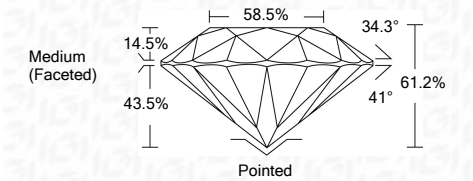
GRADING RESULTS

Carat Weight 4.02 CARATS

Color Grade G

Clarity Grade VVS 1

Cut Grade IDEAL



ADDITIONAL GRADING INFORMATION

Polish EXCELLENT

Symmetry EXCELLENT

Fluorescence NONE

Inscription(s) LABGROWN IGI LG478109515

Comments: As Grown - No indication of post-growth treatment. This Laboratory Grown Diamond was created by High Pressure High Temperature (HPHT) growth process. Type II Faint Blue

06/07/2021

IGI Report Number LG478109515

Shape and Cutting Style ROUND BRILLIANT

Measurements 10.20 - 10.25 x 6.26 mm

GRADING RESULTS

Carat Weight 4.02 CARATS

Color Grade G

Clarity Grade VVS 1

Cut Grade IDEAL

ADDITIONAL GRADING INFORMATION

Polish EXCELLENT

Symmetry EXCELLENT

Fluorescence NONE

Inscription(s) LABGROWN IGI LG478109515

Comments: As Grown - No indication of post-growth treatment.

This Laboratory Grown Diamond was created by High Pressure High Temperature (HPHT) growth process.

Type II Faint Blue



IGI

Summary table of report details: IGI Report No. LG478109515, ROUND BRILLIANT, 10.20 - 10.25 x 6.26 mm, 4.02 CARATS, G, VVS 1, IDEAL, 61.2%, 58.5%, Medium (Faceted), Pointed, EXCELLENT, EXCELLENT, NONE, LABGROWN IGI LG478109515.