



**ELECTRONIC COPY**

# LABORATORY GROWN DIAMOND REPORT

LABORATORY GROWN DIAMOND REPORT

## LABORATORY GROWN DIAMOND REPORT

July 26, 2021

IGI Report Number **LG478118257**

Description	LABORATORY GROWN DIAMOND
Shape and Cutting Style	HEART BRILLIANT

Measurements	6.18 X 7.02 X 4.09 MM
--------------	-----------------------

## GRADING RESULTS

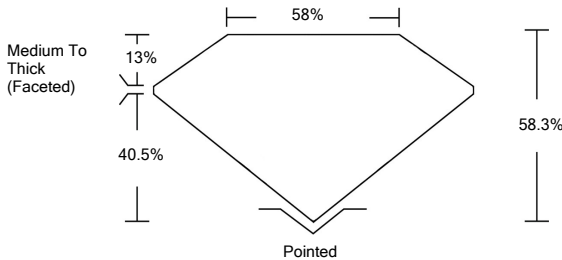
Carat Weight	1.02 CARAT
Color Grade	FANCY DEEP GREENISH BLUE
Clarity Grade	VVS 2

## ADDITIONAL GRADING INFORMATION

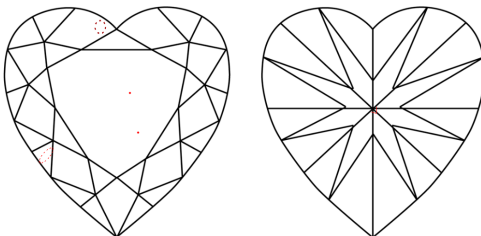
Polish	EXCELLENT
Symmetry	VERY GOOD
Fluorescence	NONE
Inscription(s)	LABGROWN IGI LG478118257

Comments: This Laboratory Grown Diamond was created by Chemical Vapor Deposition (CVD) growth process.  
Indications of post-growth treatment.

## PROPORTIONS



## CLARITY CHARACTERISTICS



## KEY TO SYMBOLS

Red symbols indicate internal characteristics.  
Green symbols indicate external characteristics.

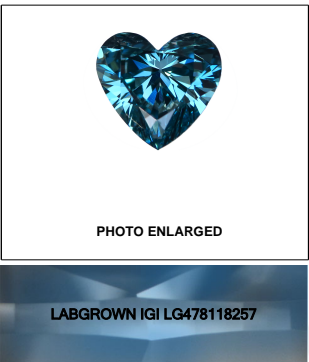
## GRADING SCALES

COLOR GRADING SCALE	CL		NC		FT		VLT		LT	
	COLORLESS D-F		NEAR COLORLESS G-J		FAINT K-M		VERY LIGHT N-R		LIGHT S-Z	
CLARITY (10x) GRADING SCALE	FL	IF	VVS		VS		SI		I	
	FLAWLESS		VERY VERY INTERNALLY INCLUDED		VERY SLIGHTLY INCLUDED		SLIGHTLY INCLUDED		INCLUDED	

The laboratory grown diamond described in this Report ("Report") has been graded, tested, analyzed, examined and/or inscribed by International Gemological Institute ("IGI"). A laboratory grown diamond is one that has essentially the same chemical, physical and optical properties as a naturally occurring diamond except it was created by man (a manufactured product). IGI employs and utilizes those techniques and equipment currently available to IGI, including, without limitation, 10X magnification, corrected incident light, binocular microscope, master color comparison stones, non-contact infrared spectrometer, ultraviolet fluorescence examination, etc., and uses such other instruments and/or processes as deemed appropriate by IGI. This Report includes adequate security features. A duly accredited gemologist or jeweler can advise you with regard to the importance of and interrelationship between cut, color, clarity and carat weight.

**THIS REPORT IS NEITHER A GUARANTEE, VALUATION, NOR APPRAISAL OF THE GEMSTONE DESCRIBED HEREIN. PLEASE REVIEW THE LIMITATIONS AND RESTRICTIONS SET FORTH ONLINE. FOR MORE INFORMATION REGARDING OUR POLICIES, CONDITIONS, TERMS AND DISCLAIMERS, PLEASE GO TO WWW.IGI.ORG OR CALL 1-888-BUY-IGI.**

© INTERNATIONAL GEMOLOGICAL INSTITUTE, INC.

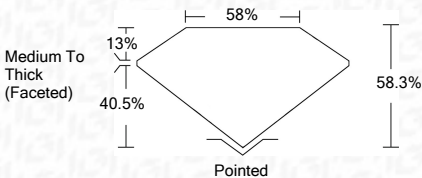
**LASERSCRIBE<sup>SM</sup>**

© IGI 2020, International Gemological Institute

FD - 10 20

**www.igi.org**

July 26, 2021	
IGI Report Number	LG478118257
Description	LABORATORY GROWN DIAMOND
Shape and Cutting Style	HEART BRILLIANT
Measurements	6.18 X 7.02 X 4.09 MM
<b>GRADING RESULTS</b>	
Carat Weight	1.02 CARAT
Color Grade	FANCY DEEP GREENISH BLUE
Clarity Grade	VVS 2



### ADDITIONAL GRADING INFORMATION

Polish	EXCELLENT
Symmetry	VERY GOOD
Fluorescence	NONE
Inscription(s)	LABGROWN IGI LG478118257

Comments: This Laboratory Grown Diamond was created by Chemical Vapor Deposition (CVD) growth process.  
Indications of post-growth treatment.



IGI

July 26, 2021	IGI Report No. LG478118257	HEART BRILLIANT		1.02 CARAT BLUE FANCY DEEP GREENISH VVS 2 58.3% Medium To Thick (Pavé)		Polished EXCELLENT VERY GOOD NONE LABGROWN (IGI LG478118257	58.3%
6.18 X 7.02 X 4.09 MM		Carat Weight		Color Grade		Clarity Grade	
HEART BRILLIANT		Fancy Deep Greenish		VVS 2		58.3%	
Carat Weight		Fancy Deep Greenish		VVS 2		58.3%	
Color Grade		Fancy Deep Greenish		VVS 2		58.3%	
Clarity Grade		Fancy Deep Greenish		VVS 2		58.3%	
Depth		Fancy Deep Greenish		VVS 2		58.3%	
Table		Fancy Deep Greenish		VVS 2		58.3%	
Girdle		Fancy Deep Greenish		VVS 2		58.3%	
Culet		Fancy Deep Greenish		VVS 2		58.3%	
Polish		Fancy Deep Greenish		VVS 2		58.3%	
Symmetry		Fancy Deep Greenish		VVS 2		58.3%	
Fluorescence		Fancy Deep Greenish		VVS 2		58.3%	
Inscription(s)		Fancy Deep Greenish		VVS 2		58.3%	
Comments:		Fancy Deep Greenish		VVS 2		58.3%	
This Laboratory Grown Diamond was grown using the Chemical Vapor Deposition (CVD) growth process. Indications of post-growth treatment.		Fancy Deep Greenish		VVS 2		58.3%	