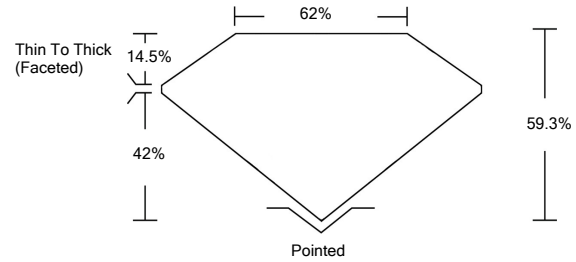




LG478124693

LABORATORY GROWN DIAMOND REPORT

PROPORTIONS

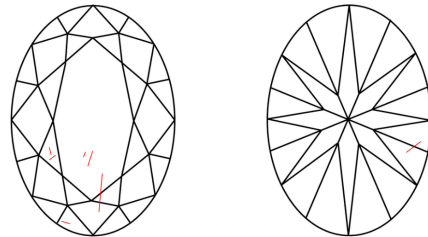


GRADING SCALES

Table with 5 columns for Color Grading Scale (CL, NC, FT, VLT, LT) and Clarity (10x) Grading Scale (FL, IF, VVS, VS, SI, I).

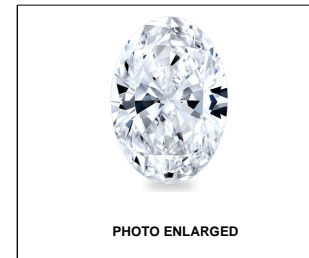
The laboratory grown diamond described in this Report (Report) has been graded, tested, analyzed, examined and/or inscribed by International Gemological Institute (IGI). A laboratory grown diamond is one that has essentially the same chemical, physical and optical properties as a mined diamond...

CLARITY CHARACTERISTICS



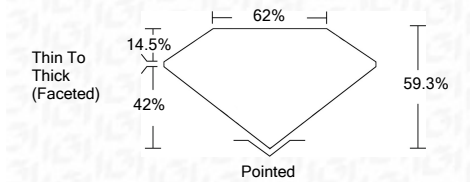
KEY TO SYMBOLS

Red symbols indicate internal characteristics. Green symbols indicate external characteristics.



LASERSCRIBE<sup>SM</sup>

06/16/2021 IGI Report Number LG478124693 Shape and Cutting Style OVAL BRILLIANT Measurements 10.28 x 7.22 x 4.28 mm GRADING RESULTS Carat Weight 2.00 CARATS Color Grade K Clarity Grade SI 2



ADDITIONAL GRADING INFORMATION

Polish EXCELLENT Symmetry EXCELLENT Fluorescence NONE Inscription(s) LABGROWN IGI LG478124693

Comments: This Laboratory Grown Diamond was created by Chemical Vapor Deposition (CVD) growth process and may include post-growth treatment. Type IIa



IGI

06/16/2021 IGI Report No. LG478124693 OVAL BRILLIANT 10.28 x 7.22 x 4.28 mm Carat Weight 2.00 CARATS Color Grade K Clarity Grade SI 2 Depth 59.3% Table 62% Grade Thin To Thick (Faceted) Pointed EXCELLENT EXCELLENT NONE LABGROWN IGI LG478124693

Comments: This Laboratory Grown Diamond was created by Chemical Vapor Deposition (CVD) growth process and may include post-growth treatment. Type IIa

