



**INTERNATIONAL  
GEMOLOGICAL  
INSTITUTE**

**ELECTRONIC COPY**

**LABORATORY GROWN DIAMOND REPORT**

**IGI LABORATORY GROWN  
DIAMOND ID REPORT**

June 29, 2022  
IGI Report Number **LG478127328**  
**PRINCESS CUT**  
**8.15 X 8.16 X 5.63 MM**  
Carat Weight 3.32 CARATS  
Color Grade E  
Clarity Grade VVS 2  
Polish VERY GOOD  
Symmetry VERY GOOD  
Fluorescence NONE  
Inscription(s) LABGROWN IGI  
LG478127328

Comments: As Grown - No indication of post-growth treatment.  
This Laboratory Grown Diamond was created by Chemical Vapor Deposition (CVD) process.

**LABORATORY GROWN DIAMOND REPORT**

**IGI LABORATORY GROWN DIAMOND IDENTIFICATION REPORT**

June 29, 2022  
IGI Report Number LG478127328  
Description LABORATORY GROWN DIAMOND  
Shape and Cutting Style PRINCESS CUT  
Measurements 8.15 X 8.16 X 5.63 MM

**GRADING RESULTS**

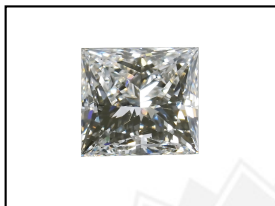
Carat Weight 3.32 CARATS  
Color Grade E  
Clarity Grade VVS 2

**ADDITIONAL GRADING INFORMATION**

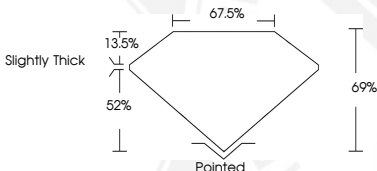
Polish VERY GOOD  
Symmetry VERY GOOD  
Fluorescence NONE  
Inscription(s) LABGROWN IGI LG478127328

Comments: As Grown - No indication of post-growth treatment.  
This Laboratory Grown Diamond was created by Chemical Vapor Deposition (CVD) process.

**LG478127328**



**LASERSCRIBE<sup>SM</sup>**  
Sample Images Used



**IGI LABORATORY GROWN  
DIAMOND ID REPORT**

June 29, 2022  
IGI Report Number **LG478127328**  
**PRINCESS CUT**  
**8.15 X 8.16 X 5.63 MM**  
Carat Weight 3.32 CARATS  
Color Grade E  
Clarity Grade VVS 2  
Polish VERY GOOD  
Symmetry VERY GOOD  
Fluorescence NONE  
Inscription(s) LABGROWN IGI  
LG478127328

Comments: As Grown - No indication of post-growth treatment.  
This Laboratory Grown Diamond was created by Chemical Vapor Deposition (CVD) process.

THIS DOCUMENT WAS PRODUCED WITH THE FOLLOWING SECURITY MEASURES: SPECIAL DOCUMENT PAPER, INK SCREENS, WATERMARK, BACKGROUND DESIGN, HOLOGRAM AND OTHER SECURITY FEATURES NOT LISTED AND DO EXCEED DOCUMENT SECURITY INDUSTRY GUIDELINES.

For terms & conditions and to verify this report, please visit [www.igi.org](http://www.igi.org)