



LABORATORY GROWN DIAMOND REPORT
LG478127732
Report verification at igi.org

GRADING SCALES

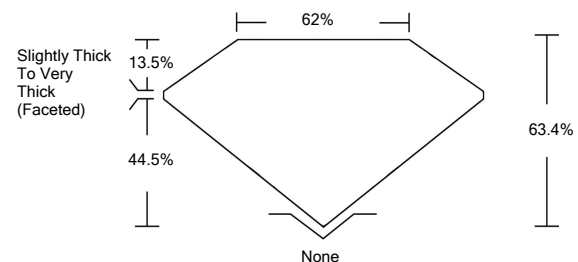
CLARITY

| IF | VVS ¹⁻² | VS ¹⁻² | SI ¹⁻² | I ¹⁻³ |
|---------------------|-----------------------------|------------------------|-------------------|------------------|
| Internally Flawless | Very Very Slightly Included | Very Slightly Included | Slightly Included | Included |

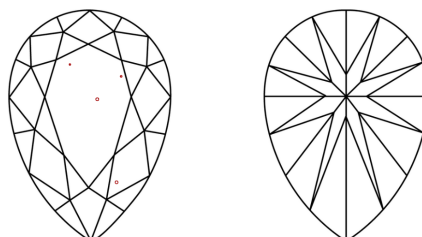
COLOR

| D | E | F | G | H | I | J | Faint | Very Light | Light |
|---|---|---|---|---|---|---|-------|------------|-------|
|---|---|---|---|---|---|---|-------|------------|-------|

PROPORTIONS

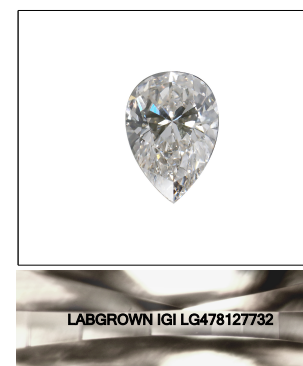


CLARITY CHARACTERISTICS



KEY TO SYMBOLS

Red symbols indicate internal characteristics.
Green symbols indicate external characteristics.



LASERSCRIBESM

Sample Image Used



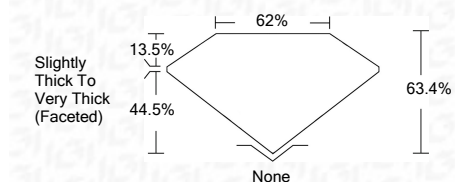
ELECTRONIC COPY

LABORATORY GROWN DIAMOND REPORT

| | |
|---------------------------------------|---------------------------------|
| June 23, 2022 | |
| IGI Report Number | LG478127732 |
| Description | LABORATORY GROWN DIAMOND |
| Shape and Cutting Style | PEAR BRILLIANT |
| Measurements | 8.24 X 5.27 X 3.34 MM |
| GRADING RESULTS | |
| Carat Weight | 0.85 CARAT |
| Color Grade | J |
| Clarity Grade | VS 1 |
| ADDITIONAL GRADING INFORMATION | |
| Polish | GOOD |
| Symmetry | GOOD |
| Fluorescence | NONE |
| Inscription(s) | LABGROWN IGI LG478127732 |

Comments:
Pre-existing laser inscription on girdle.
This Laboratory Grown Diamond was created by Chemical Vapor Deposition (CVD) growth process and may include post-growth treatment.
Type IIa

| | |
|-------------------------|---------------------------------|
| June 23, 2022 | |
| IGI Report Number | LG478127732 |
| Description | LABORATORY GROWN DIAMOND |
| Shape and Cutting Style | PEAR BRILLIANT |
| Measurements | 8.24 X 5.27 X 3.34 MM |
| GRADING RESULTS | |
| Carat Weight | 0.85 CARAT |
| Color Grade | J |
| Clarity Grade | VS 1 |



| | |
|--|---------------------------------|
| ADDITIONAL GRADING INFORMATION | |
| Polish | GOOD |
| Symmetry | GOOD |
| Fluorescence | NONE |
| Inscription(s) | LABGROWN IGI LG478127732 |
| Comments: Pre-existing laser inscription on girdle. This Laboratory Grown Diamond was created by Chemical Vapor Deposition (CVD) growth process and may include post-growth treatment. Type IIa | |



IGI

| | |
|---|---|
| June 23, 2022 | |
| IGI Report No. LG478127732 | |
| PEAR BRILLIANT | |
| Carat Weight | 0.85 CARAT |
| Color Grade | J |
| Clarity Grade | VS 1 |
| Depth | 63.4% |
| Table | 62% |
| Girdle | Slightly Thick To Very Thick (Faceted) |
| Culet | None |
| Polish | GOOD |
| Symmetry | GOOD |
| Fluorescence | NONE |
| Inscription(s) | LABGROWN IGI LG478127732 |
| Comments: | LABGROWN IGI LG478127732 |
| Pre-existing laser inscription on girdle. This Laboratory Grown Diamond was created by Chemical Vapor Deposition (CVD) growth process and may include post-growth treatment. Type IIa | |