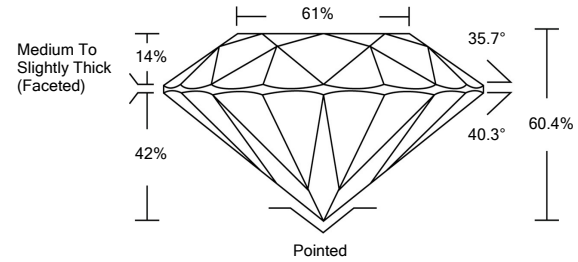




**LABORATORY GROWN DIAMOND REPORT**

LG480148923

**PROPORTIONS**



**GRADING SCALES**

COLOR GRADING SCALE	CL	NC	FT	VL	LT
	COLORLESS D-F	NEAR COLORLESS G-J	FAINT K-M	VERY LIGHT N-R	LIGHT S-Z
CLARITY (10X) GRADING SCALE	FL	VVS	VS	SI	I
	FLAWLESS INTERNALLY FLAWLESS	VERY VERY SLIGHTLY INCLUDED	VERY SLIGHTLY INCLUDED	SLIGHTLY INCLUDED	INCLUDED

The laboratory grown diamond described in this Report (Report) has been graded, tested, analyzed, examined and/or inscribed by International Gemological Institute (IGI). A laboratory grown diamond is one that has essentially the same chemical, physical and optical properties as a mined diamond, with the exception of being grown by man (a manufactured product). IGI employs and utilizes those techniques and equipment currently available to IGI, including, without limitation, 10X magnification, corrected triplet loupe, binocular microscope, master color comparison stones, non-contact-optical measuring device, Diamond Sure™, Diamond View™, Spectrophotometer and such other instruments and/or processes as deemed appropriate by IGI. This Report includes advanced security features. A duly accredited gemologist or jeweler can advise you with respect to the importance of and interrelationship between cut, color, clarity and carat weight.

**THIS REPORT IS NEITHER A GUARANTEE, VALUATION, NOR APPRAISAL OF THE GEMSTONE DESCRIBED HEREIN. PLEASE REVIEW THE LIMITATIONS AND RESTRICTIONS SET FORTH ONLINE. FOR ADDITIONAL INFORMATION, IMPORTANT LIMITATIONS AND DISCLAIMERS, PLEASE GO TO WWW.IGI.ORG OR CALL 1-888-BUY-IGIS.**

© INTERNATIONAL GEMOLOGICAL INSTITUTE, INC.

06/22/2021

IGI Report Number **LG480148923**

Shape and Cutting Style **ROUND BRILLIANT**

Measurements **8.34 - 8.40 x 5.06 mm**

**GRADING RESULTS**

Carat Weight **2.23 CARATS**

Color Grade **J**

Clarity Grade **VS 2**

Cut Grade **EXCELLENT**

06/22/2021

IGI Report Number **LG480148923**

Shape and Cutting Style **ROUND BRILLIANT**

Measurements **8.34 - 8.40 x 5.06 mm**

**GRADING RESULTS**

Carat Weight **2.23 CARATS**

Color Grade **J**

Clarity Grade **VS 2**

Cut Grade **EXCELLENT**

**ADDITIONAL GRADING INFORMATION**

Polish **EXCELLENT**

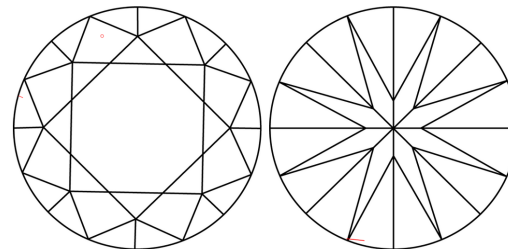
Symmetry **EXCELLENT**

Fluorescence **NONE**

Inscription(s) **LABGROWN IGI LG480148923**

Comments: This Laboratory Grown Diamond was created by Chemical Vapor Deposition (CVD) growth process and may include post-growth treatment.  
Type IIa

**CLARITY CHARACTERISTICS**



**KEY TO SYMBOLS**

Red symbols indicate internal characteristics.  
Green symbols indicate external characteristics.

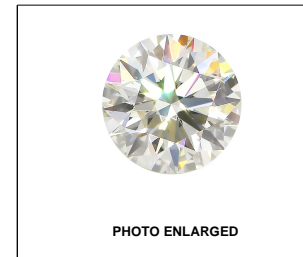
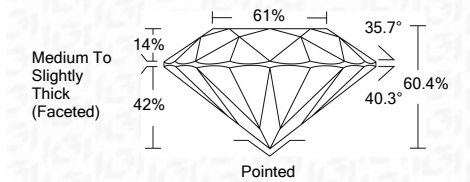


PHOTO ENLARGED

LABGROWN IGI LG480148923

LASERSCRIBE<sup>SM</sup>



**ADDITIONAL GRADING INFORMATION**

Polish **EXCELLENT**

Symmetry **EXCELLENT**

Fluorescence **NONE**

Inscription(s) **LABGROWN IGI LG480148923**

Comments: This Laboratory Grown Diamond was created by Chemical Vapor Deposition (CVD) growth process and may include post-growth treatment.  
Type IIa



**IGI**

06/22/2021  
IGI Report No. LG480148923  
**ROUND BRILLIANT**  
Carat Weight **2.23 CARATS**  
Color Grade **J**  
Clarity Grade **VS 2**  
Cut Grade **EXCELLENT**  
Depth **60.4%**  
Table **61%**  
Girdle **Medium To Slightly Thick (Faceted)**  
Culet **Pointed**  
Polish **EXCELLENT**  
Symmetry **EXCELLENT**  
Fluorescence **NONE**  
Inscription(s) **LABGROWN IGI LG480148923**  
Comments: This Laboratory Grown Diamond was created by Chemical Vapor Deposition (CVD) growth process and may include post-growth treatment.  
Type IIa