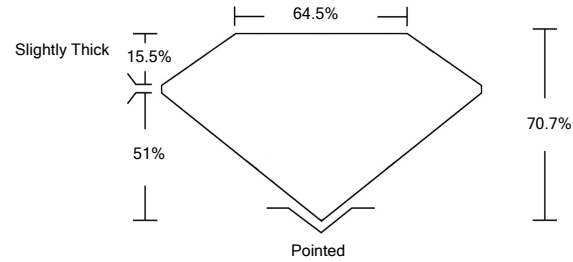




LABORATORY GROWN DIAMOND REPORT

LG480151990

PROPORTIONS



GRADING SCALES

Table with 5 columns for Color Grading Scale (CL to LT) and Clarity (10x) Grading Scale (FL to I).

The laboratory grown diamond described in this Report (Report) has been graded, tested, analyzed, examined and/or inscribed by International Gemological Institute (IGI). A laboratory grown diamond is one that has essentially the same chemical, physical and optical properties as a mined diamond...

© INTERNATIONAL GEMOLOGICAL INSTITUTE, INC.

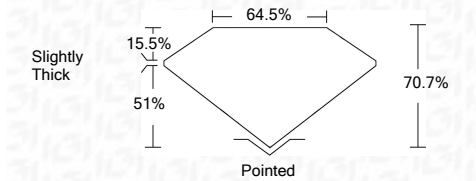
06/16/2021

IGI Report Number: LG480151990, Shape and Cutting Style: CUT CORNERED RECTANGULAR MODIFIED BRILLIANT

Measurements: 8.23 x 5.74 x 4.06 mm

GRADING RESULTS

Carat Weight: 1.66 CARAT, Color Grade: G, Clarity Grade: VS 2



ADDITIONAL GRADING INFORMATION

Polish: EXCELLENT, Symmetry: VERY GOOD, Fluorescence: NONE, Inscription(s): LABGROWN IGI LG480151990

Comments: This Laboratory Grown Diamond was created by Chemical Vapor Deposition (CVD) growth process and may include post-growth treatment. Type IIa

06/16/2021, IGI Report Number: LG480151990, Shape and Cutting Style: CUT CORNERED RECTANGULAR MODIFIED BRILLIANT, Measurements: 8.23 x 5.74 x 4.06 mm

GRADING RESULTS

Carat Weight: 1.66 CARAT, Color Grade: G, Clarity Grade: VS 2

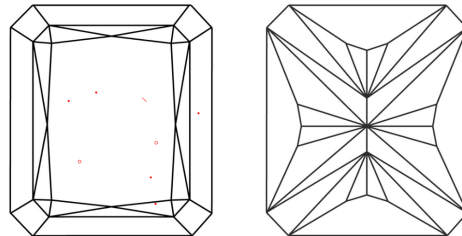
ADDITIONAL GRADING INFORMATION

Polish: EXCELLENT, Symmetry: VERY GOOD, Fluorescence: NONE

Inscription(s): LABGROWN IGI LG480151990

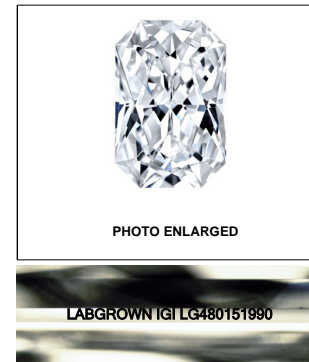
Comments: This Laboratory Grown Diamond was created by Chemical Vapor Deposition (CVD) growth process and may include post-growth treatment. Type IIa

CLARITY CHARACTERISTICS



KEY TO SYMBOLS

Red symbols indicate internal characteristics. Green symbols indicate external characteristics.



LASERSCRIBE SM



IGI

06/16/2021, IGI Report No. LG480151990, CUT CORNERED RECT. MODIFIED BRILLIANT, 8.23 x 5.74 x 4.06 mm, 1.66 CARAT, G, VS 2, 70.7%, 64.5%, Slightly Thick, Pointed, EXCELLENT, VERY GOOD, NONE, LABGROWN IGI LG480151990

This Laboratory Grown Diamond was created by Chemical Vapor Deposition (CVD) growth process and may include post-growth treatment. Type IIa