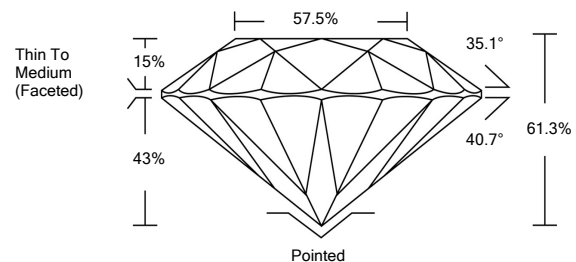




LABORATORY GROWN DIAMOND REPORT

LG480158193

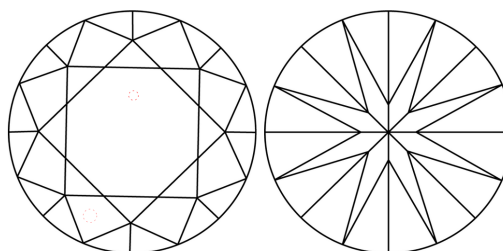
PROPORTIONS



GRADING SCALES

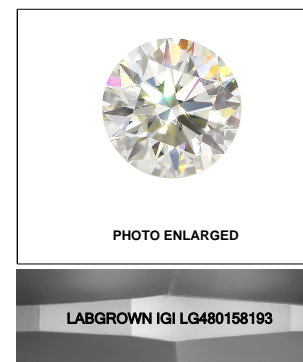
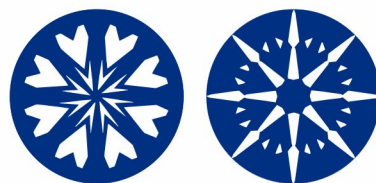
COLOR GRADING SCALE	CL	NC	FT	VL	LT	
	COLORLESS D-F	NEAR COLORLESS G-J	FAINT K-M	VERY LIGHT N-R	LIGHT S-Z	
CLARITY (10x) GRADING SCALE	FL	IF	VVS	VS	SI	I
	FLAWLESS INTERNALLY FLAWLESS	VERY VERY SLIGHTLY INCLUDED	VERY SLIGHTLY INCLUDED	SLIGHTLY INCLUDED	INCLUDED	

CLARITY CHARACTERISTICS



KEY TO SYMBOLS

Red symbols indicate internal characteristics.
Green symbols indicate external characteristics.



LABGROWN IGI LG480158193

LASERSCRIBESM

06/28/2021

IGI Report Number **LG480158193**

Shape and Cutting Style **ROUND BRILLIANT**

Measurements **8.53 - 8.57 x 5.24 mm**

GRADING RESULTS

Carat Weight **2.34 CARATS**

Color Grade **F**

Clarity Grade **VVS 2**

Cut Grade **IDEAL**

ADDITIONAL GRADING INFORMATION

Polish **EXCELLENT**

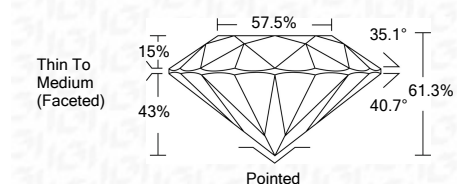
Symmetry **EXCELLENT**

Fluorescence **NONE**

Inscription(s) **LABGROWN IGI LG480158193**

Comments: HEARTS & ARROWS

As Grown - No indication of post-growth treatment
This Laboratory Grown Diamond was created by Chemical Vapor Deposition (CVD) growth process
Type IIa



IGI

06/28/2021	IGI Report No. LG480158193	2.34 CARATS	F
ROUND BRILLIANT	8.53 - 8.57 x 5.24 mm	VVS 2	IDEAL
Carat Weight	Color Grade	Depth	61.3%
Clarity Grade	Cut Grade	Table	57.5%
Depth	Table	Grille	Thin To Medium (Faceted)
Table	Grille	Culet	Pointed
Grille	Culet	Polish	EXCELLENT
Culet	Polish	Symmetry	EXCELLENT
Polish	Symmetry	Fluorescence	NONE
Symmetry	Fluorescence	Inscription(s)	LABGROWN IGI LG480158193
Fluorescence	Inscription(s)	Comments:	HEARTS & ARROWS
Inscription(s)	Comments:	As Grown - No indication of post-growth treatment	
Comments:	As Grown - No indication of post-growth treatment	This Laboratory Grown Diamond was created by Chemical Vapor Deposition (CVD) growth process	Type IIa

